

Precautions

- \*Please refer to the online help for instructions on software set-up, system calibration, and detailed operations.
- \*This Guide details the basic operations of OLYMPUS Stream Start and OLYMPUS Stream Basic utilizing a BX51M (manual upright microscope) and a DP21 digital color camera.
- \*Microsoft Word and Microsoft Excel for OLYMPUS Stream Basic or higher are required separately.

# Introduction

## Basic Functions

Live observation  
P2

Image capture  
P3

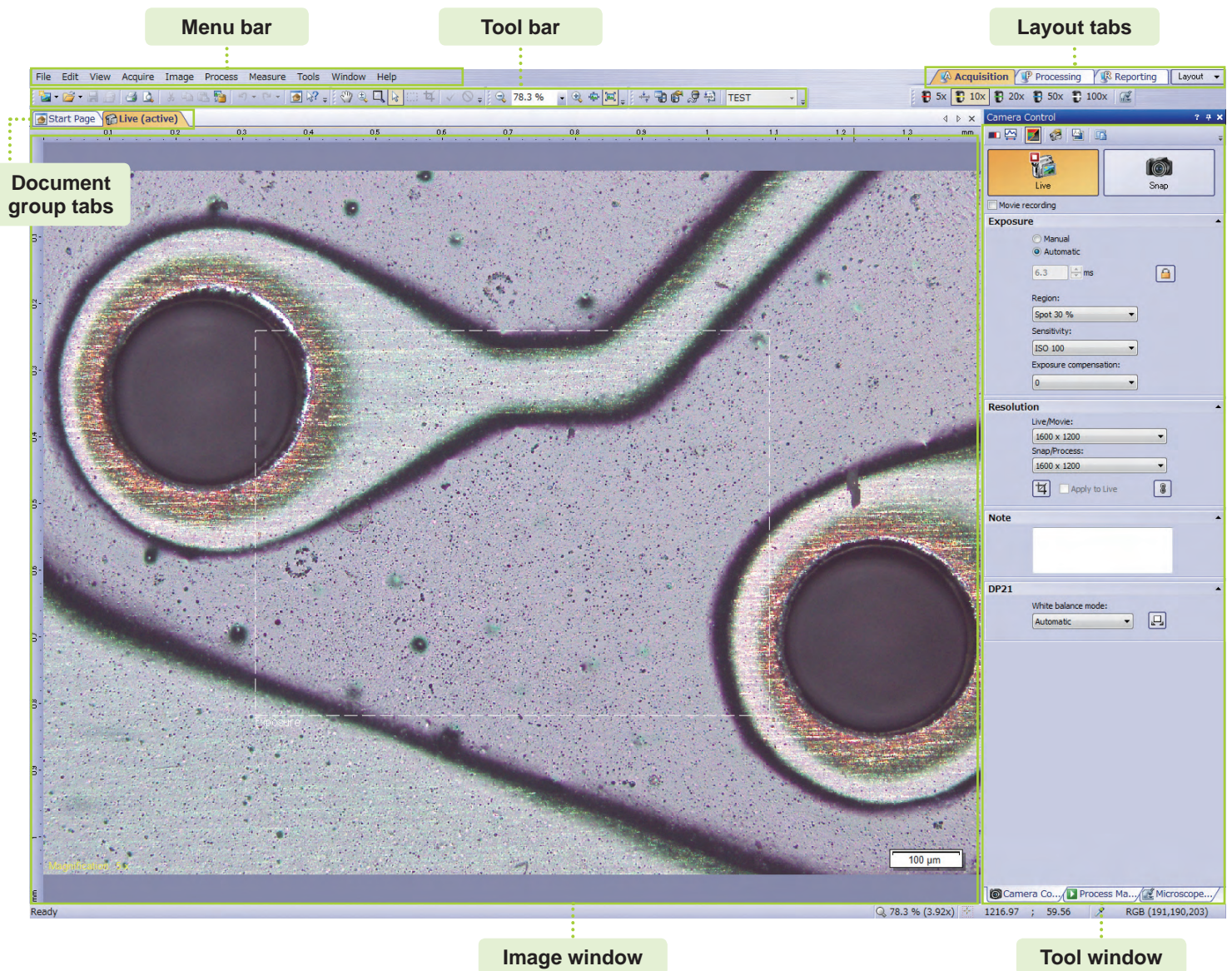
Saving an image  
P3

Measurement  
P4

Reporting  
P5

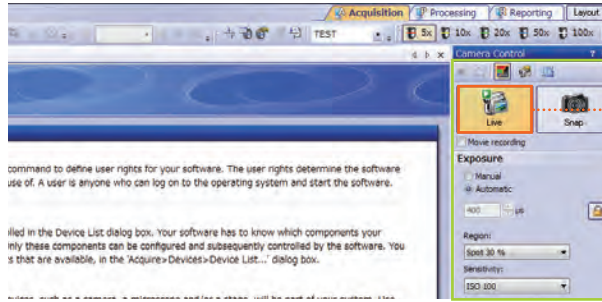
! Reporting function is not available in OLYMPUS Stream Start.

## Screen Layout



# Live Observation

## 1 <Starting Live Observation>



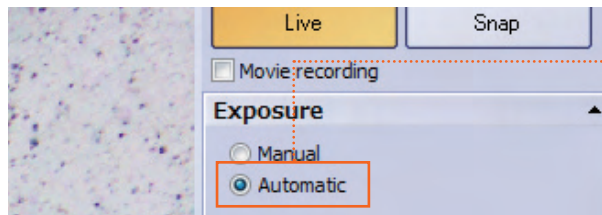
**!** Before beginning live observation, adjust the focal point by visually checking the specimen through the eyepieces.

Click the [Live] button.

**Camera Control tool window**

If the [Camera Control] tool window does not appear, select [View] > [Tool Windows] > [Camera Control].

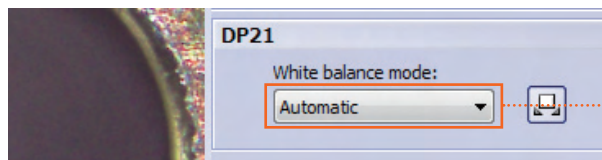
## 2 <Selecting the Exposure Mode>



Select [Automatic].

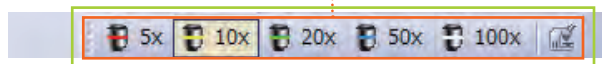
Exposure time will be adjusted automatically.

## 3 <Setting the White Balance Mode>



Select an appropriate mode. (For details on the settings, refer to the online help.)

## 4 <Configuring the Microscope Control Tool Bar>



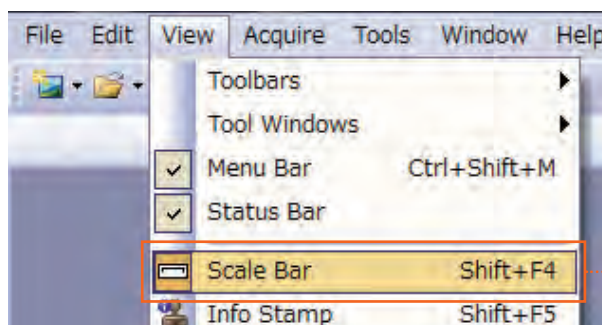
Select the magnification you use.

A magnification difference between the objective lens and the [Microscope Control] Tool Bar causes the [Scale Bar] to incorrectly appear.

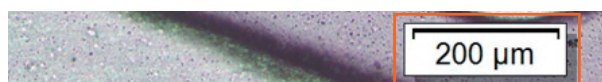
**Microscope Control tool window**

If the [Microscope Control] Tool Bar does not appear, select [View] > [Tool Bar] > [Microscope Control]

## 5 <Opening the Scale Bar Dialog>



Select [View] > [Scale Bar]



The Scale Bar is displayed.

### Tip 1

Zooming In/Out an Image with the Mouse Wheel

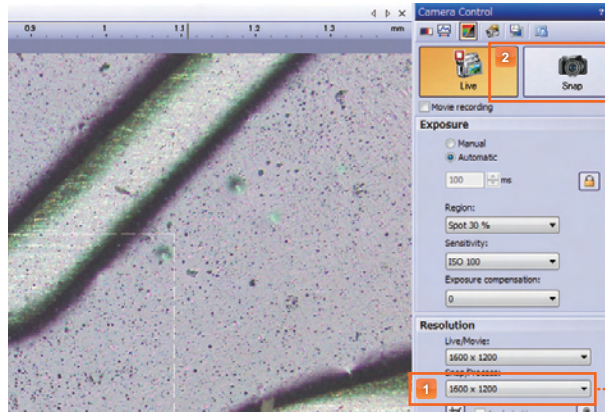
### Tip 2

Adjusting the Focal Point with the Focus Indicator



# Image Capture

<Defining the Resolution of an Image and Capturing It>



1 Select [Resolution].

2 Click the [Snap] button.

The image is captured.

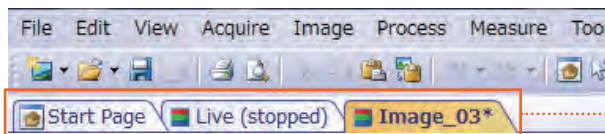


Image tab

The new document tab is added to the document group tab area.

# Saving an Image

1 <Selecting a Document to Be Saved>

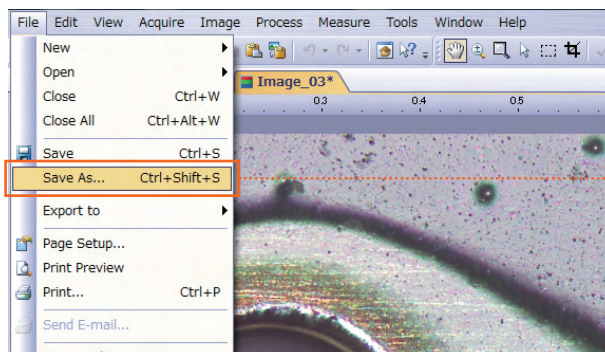


Click the tab of an image to be saved.



A live image cannot be saved.

2 <Opening the Save Image As Dialog>



Select [File] > [Save As].

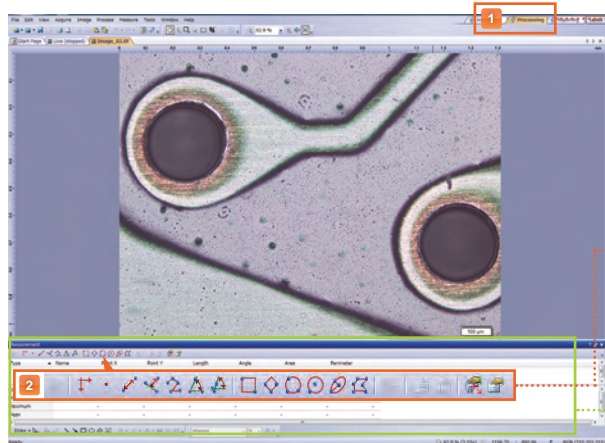
- To save the file by overwriting the old one, click (Save) on the toolbar.
- Specifying [Destination], [Name] and [Type of the File] and Saving It.
- It is possible to call up saved images by clicking (Open File).

### Tip 3

Saving an Image to a Predefined Folder

# Measurement

**1** <Switching the Layout and Selecting a Measurement Item>



**1** Click the [Processing] tab.

The [Measurement] tool window appears at the bottom of the screen.

**2** Select an item from the [Measurement] tool window.

**Measurement tool window**

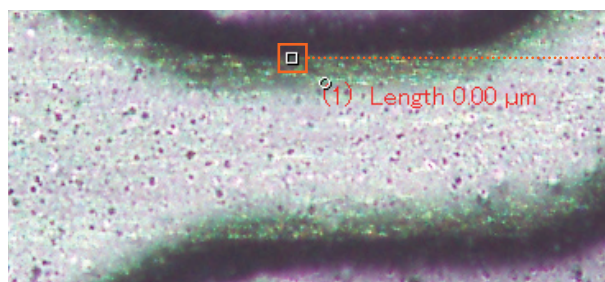
If the [Measurement] tool window does not appear, select [View] > [Tool Windows] > [Measurement].

**2** <Measuring>  
e.g.[Arbitrary Line]



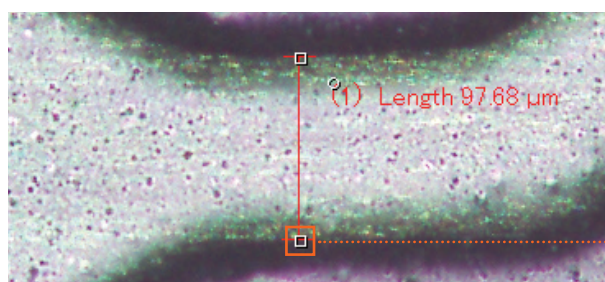
Click (Arbitrary Line).

**3** <Specifying the Start Point>



Click the start point.

**4** <Specifying the End Point>

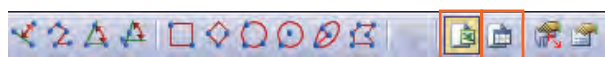


Move the mouse to the end point and click it.



- Measurement result will be displayed.  
- To delete the measurement result, select the measurement result and click the [Delete] button on the keyboard.

**5** <Exporting Measurement Result to Excel or Workbook>



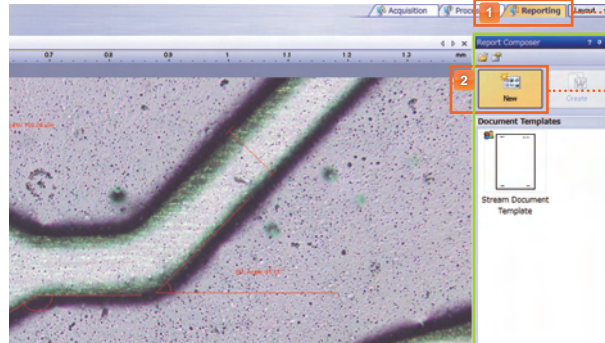
**!** OLYMPUS Stream Start cannot export measurement result to Excel or a Workbook.

When exporting to Excel file, click (Export to Excel) .

When exporting to Workbook, click (Export to Workbook) .

# Reporting

**1** <Switching the Layout and Starting Report Instruction>



**!** Reporting is not available in OLYMPUS Stream Start.

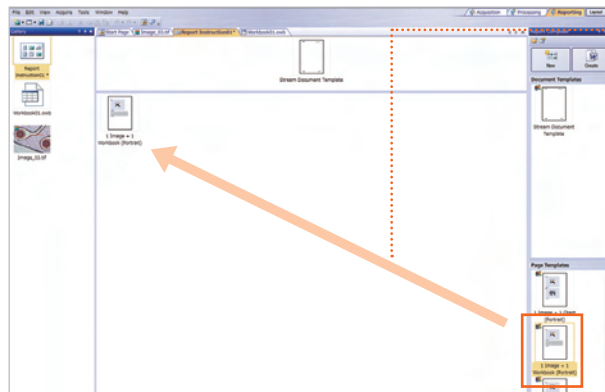
**1** Click the [Reporting] tab.

**2** Click the [New] button.

**Report Composer tool window**

If the [Report Composer] tool window does not appear, select [View] > [Tool Windows] > [Report Composer].

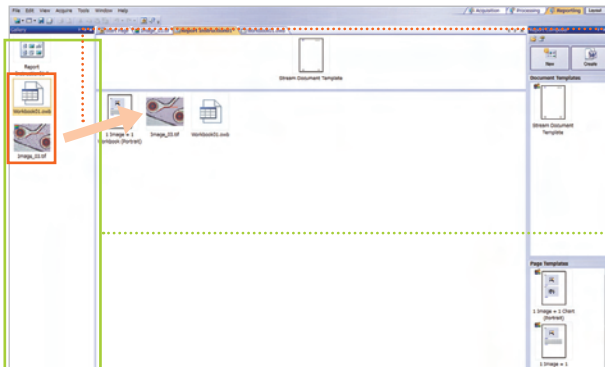
**2** <Selecting a Template from the Page Templates Pane>



**Select, drag and drop a desired template.**

- Create a report by combining images, charts and workbooks.
- The following page templates are available. Other templates can be created according to your requirements:
  - 1) 1 Image + 1 Chart
  - 2) 1 Image + 1 Workbook
  - 3) 2 Images
  - 4) 3 Images
  - 5) 4 Images

**3** <Selecting Images and Charts from the Gallery tool Window>



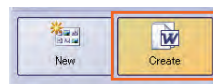
**Select, drag and drop required images and workbooks.**

- Make sure that the images and workbooks are placed on the right side of the selected template.
- Choose the images and workbooks as many as necessary for the template.

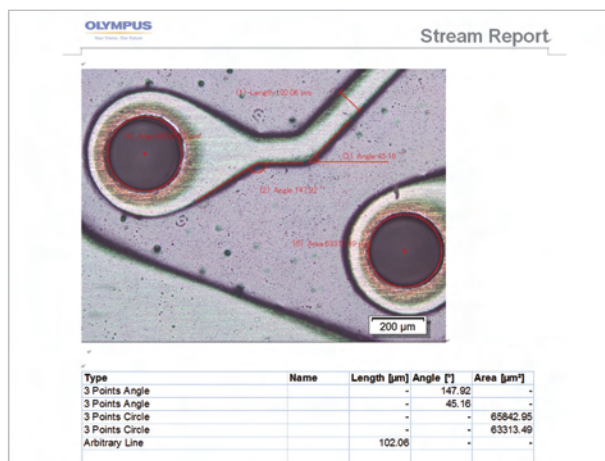
**Gallery tool window**

If the [Gallery] tool window does not appear, select [View] > [Tool Windows] > [Gallery].

**4** <Creating a Report>



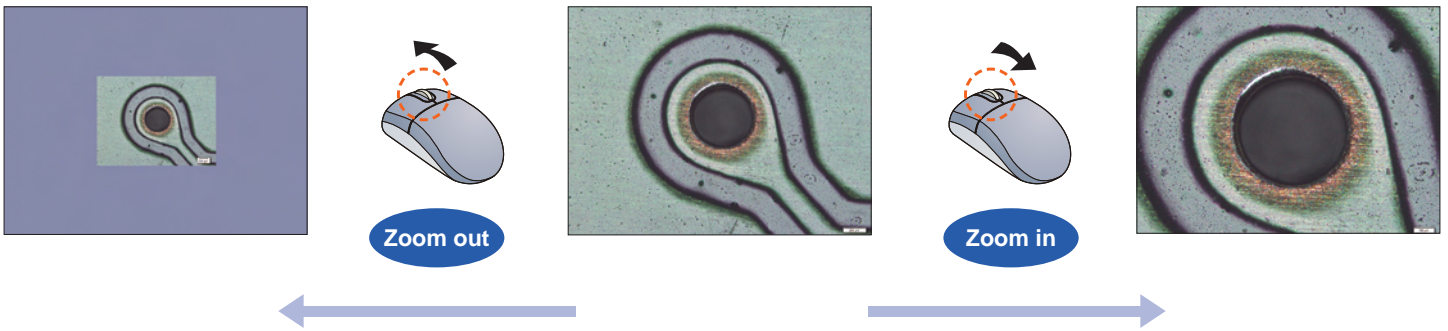
**Click the [Create] button.**



- A report is displayed.
- By double clicking the images on the Word document, the report can be edited.

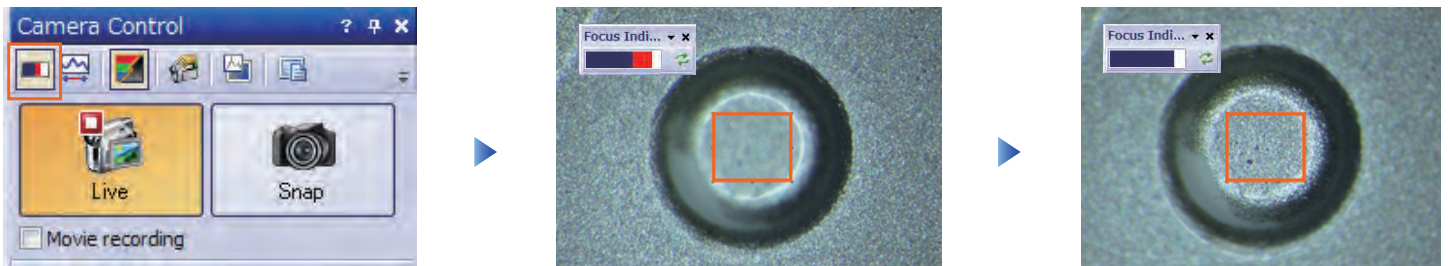


**Tip 1** Zooming In/Out an Image with the Mouse Wheel



- To change the display position of a zoomed-in image larger than the image window, click (Pan) and drag the image up/down/left/right.
- To check the display position of a zoomed-in/out image with the [Image Navigator], select [View] > [Tool Windows] > [Image Navigator].

**Tip 2** Adjusting the Focal Point with the Focus Indicator



Click (Focus Indicator).

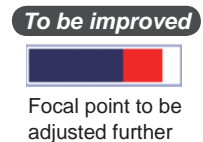
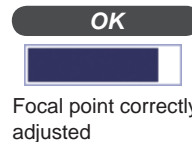
- An indicator appears on the upper left of the screen.
- You can define an area of interest for the focus indicator.

While checking the status of the indicator, adjust the focal point by turning the coarse/fine adjustment knob.

**<<Focus Indicator>>**

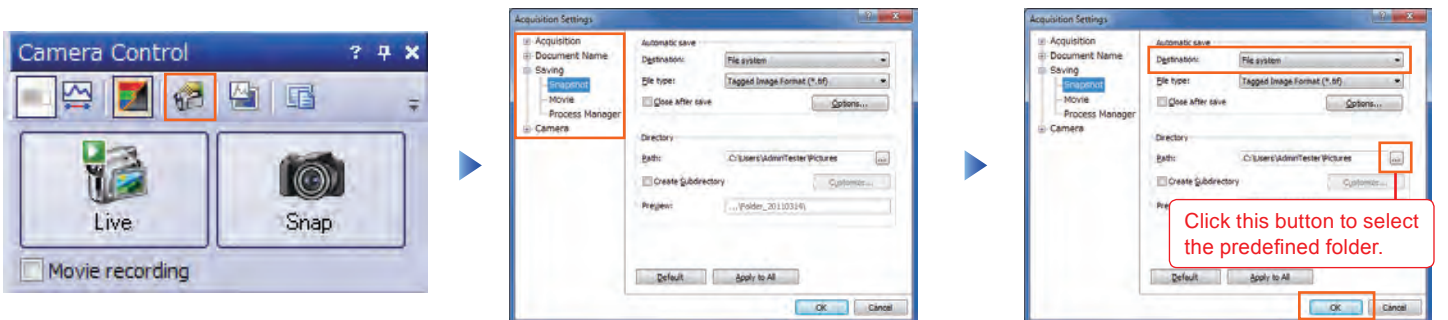


- Turn the coarse/fine adjustment knob so that the red part may become smaller.
- The status with no red part means that the focal point is correctly adjusted.



**Tip 3** Saving an Image to a Predefined Folder

By performing the following operations, it is possible to save the snapshots automatically to a predefined folder.



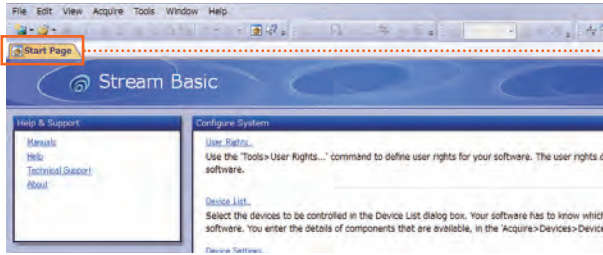
Click (Acquisition Settings) on the [Camera Control] tool window.

Select [Saving] > [Snapshot].

- Select [File system] in the [Destination] list.
- In the [Path] field, select a destination to save the snapshot.
- Click the [OK] button.

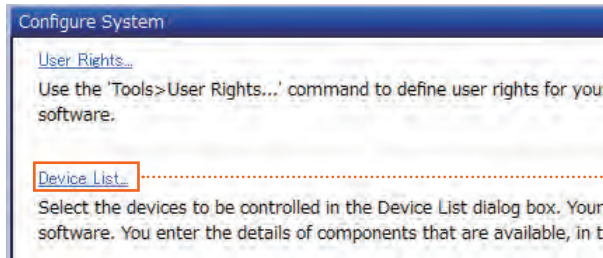
Tip 4 > Configuration and Set-up

1 <Opening the [Configure System] Dialog>



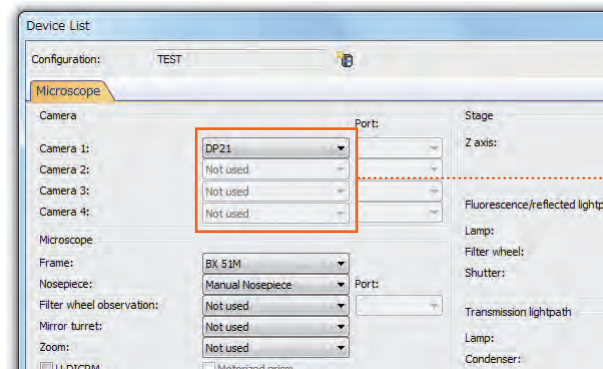
Click the [Start Page] tab.

2 <Opening the Device List Dialog>



Click [Device List].

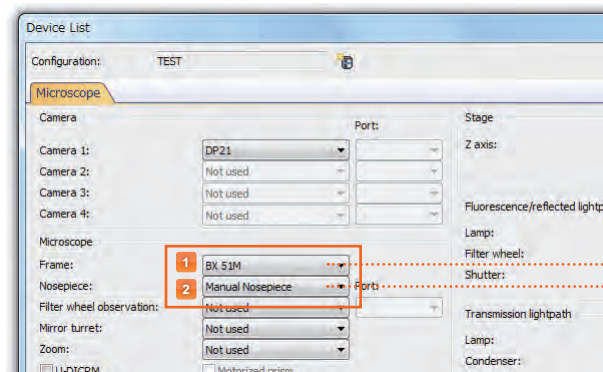
3 <Selecting the Camera>



Select the digital camera that is in use.

e.g. DP21

4 <Choosing Microscope configuration>

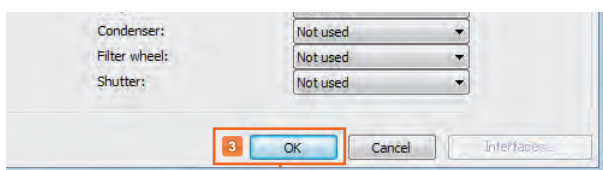


1 Select a microscope that is in use.

e.g. BX51M

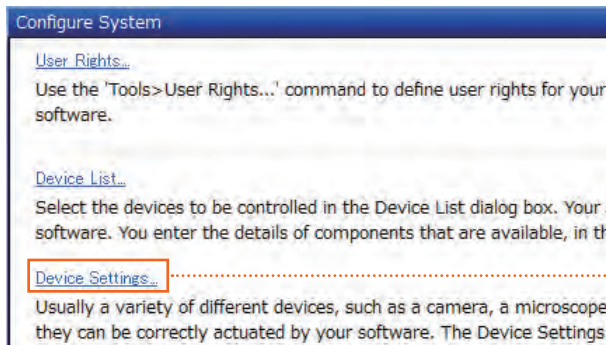
2 Select a nosepiece that is in use.

e.g. Manual Nosepiece



3 Click the [OK] button.

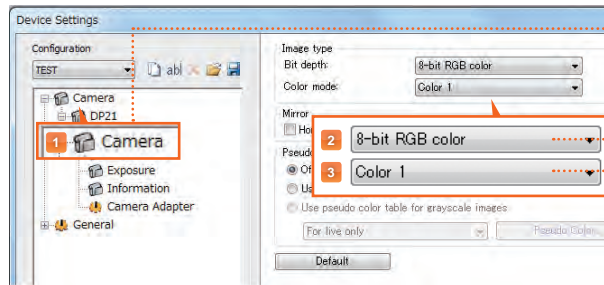
**5** <Opening the Device Settings Dialog>



Click [Device Settings].

If this screen does not appear, go to 6.

**6** <Choosing the Image Type>



1 Click [Camera].

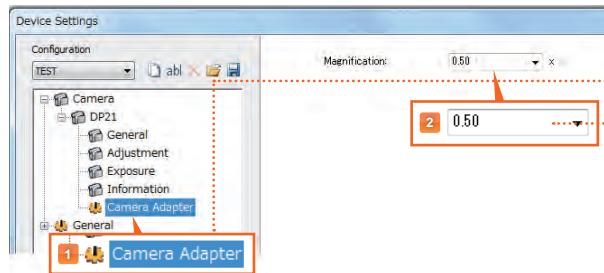
2 Select a value of [Bit depth].

e.g. 8-bit-RGB color

3 Select a value of [Color mode].

e.g. Color 1 (for DP21)

**7** <Choosing the Camera Adapter>

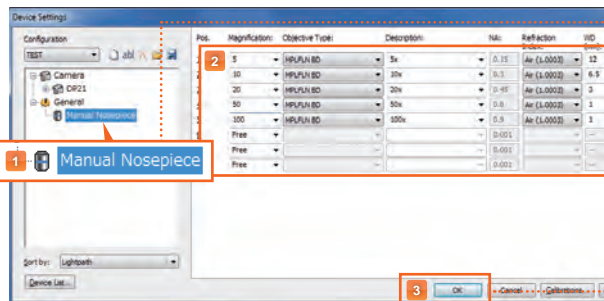


1 Click [Camera Adapter].

2 Select a magnification of the camera adapter that is in use.

e.g. 0.50

**8** <Choosing the Objective Lenses>



1 Click [Manual Nosepiece].

2 Select the objective lenses that are in use.

3 Click the [OK] button.

Microsoft Word and Microsoft Excel are registered trademarks of Microsoft Corporation in the United States and other countries. All other company and product name are registered trademarks and/or trademarks of their respective owners.