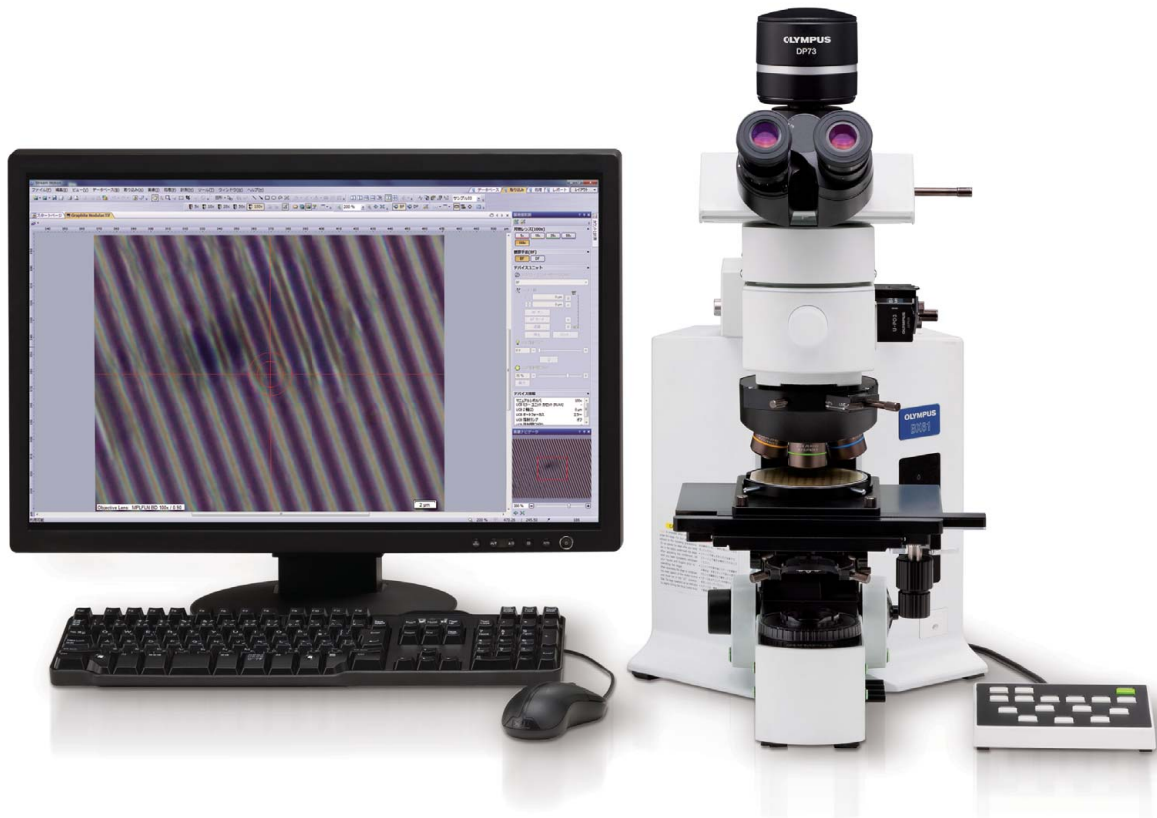


## Bring Your Sample Into Focus, Faster



The BX61 microscope system incorporates a motorized Z focus that interfaces with a laser-based autofocus unit for active focus tracking, making inspections faster and more easily reproducible. Available with both reflected and transmitted light, the BX61 can be configured with motorized components for traditional observation methods.

### Motorized Operation

With the BX61 microscope, complex operation settings such as illumination level, lens selection and aperture setting, can operate from a single key, either on the microscope keypad or with software. This feature makes it easy to reproduce observation conditions with the touch of a single button. A variety of motorized modules, including nosepieces and illuminators provide full flexibility.

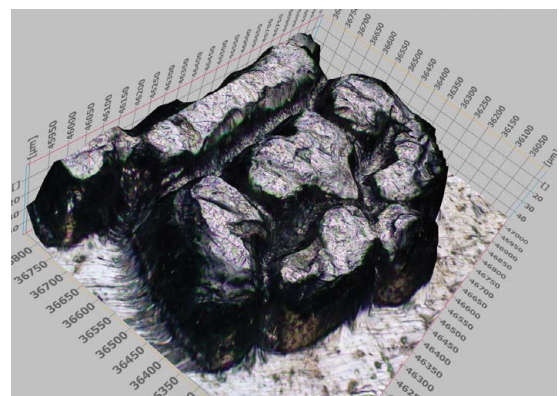
### Laser-autofocus

For fast and reproducible focusing, the BX61 can be fitted with the U-AFA2M\* autofocus unit. Utilizing an active multispot laser, the autofocus can be used with a wide variety of samples providing fast and reproducible active tracking focusing. The autofocus (U-AFA2M) is compatible with brightfield, darkfield, differential interference contrast (DIC), and simple polarized-light observations.

\*U-AFA2M-VIS is a Class 1 laser product. This unit is included in the U-AFA2M.

### Automated 3D Image Creation (EFI)

Using the BX61, users can quickly acquire and combine images for samples that extend beyond the depth of focus. The EFI image combines all of the individual focus levels into a single 3D image at the touch of a button. The resulting 3D data set can be used for 3D visualization or simple measurements of heights and distances.



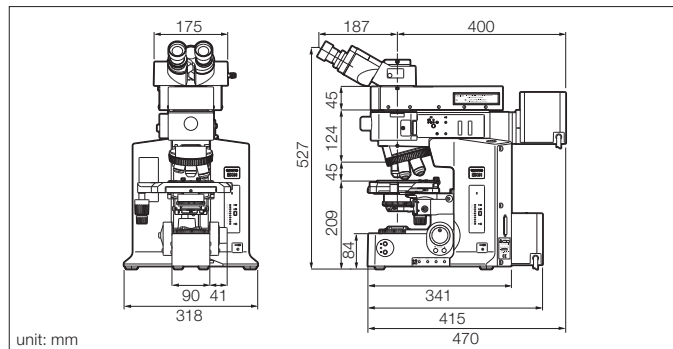
3D image of a coin detail

## Specifications

Optical system		UIS2 optical system (infinity-corrected)
Microscope frame	Illumination	Reflected/transmitted
		External 12V 100W light source, light preset switch, LED voltage indicator, reflected, transmitted, changeover switch
	Focus	Motorized focusing Stroke: 25 mm/Minimum graduation: 0.01 μm
	Max. specimen height	25 mm (w/o spacer)
Observation tube	Wide-field (FN 22)	Inverted: binocular, trinocular, tilting binocular Erect: trinocular
	Super wide-field (FN 26.5)	Inverted: trinocular Erect: trinocular, tilting trinocular
Reflected light illumination	BF, DF, DIC, and POL	BX-RLAA: motorized BF/DF changeover, motorized AS
	Reflected fluorescence	BX-RFAA: motorized 6-position turret, built-in motorized shutter with FS, AS
Transmitted light		100W halogen, Abbe/long-working-distance condensers, built-in transmitted light filters (LBD, ND25, ND6)
Revolving nosepiece	For BF	Motorized sextuple
	For BF/DF	Motorized quintuple, motorized sextuple, centering quintuple
Stage		Coaxial left (right) handle stage: 76 (X) x 52 (Y) mm, with torque adjustment Large-size coaxial left (right) handle stage: 100 (X) x 105 (Y) mm, with lock mechanism in Y-axis
Dimensions		Approx. 318 (W) x 602 (D) x 541 (H) mm
Weight		Approx. 25.5 kg (Microscope frame 11.4 kg)

## Dimensions

### BX61 (for AF Combination)



- OLYMPUS CORPORATION is ISO14001 certified.
- OLYMPUS CORPORATION is ISO9001 certified.
- This product is designed for use in industrial environments for the EMC performance. Using it in a residential environment may affect other equipment in the environment.
- All company and product names are registered trademarks and/or trademarks of their respective owners.
- Images on the PC monitors are simulated.
- Specifications and appearances are subject to change without any notice or obligation on the part of the manufacturer.
- Illumination devices for microscope have suggested lifetimes. Periodic inspections are required. Please visit our web site for details.

[www.olympus-ims.com](http://www.olympus-ims.com)

**OLYMPUS**<sup>®</sup>

For enquiries - contact  
[www.olympus-ims.com/contact-us](http://www.olympus-ims.com/contact-us)

**OLYMPUS CORPORATION**  
Shinjuku Monolith, 2-3-1 Nishi-Shinjuku, Shinjuku-ku, Tokyo 163-0914, Japan  
**OLYMPUS EUROPA SE & CO. KG**  
Wendenstrasse 14-18, 20097 Hamburg, Germany  
**OLYMPUS SCIENTIFIC SOLUTIONS AMERICAS CORP.**  
48 Woerd Avenue, Waltham, MA 02453, U.S.A.  
**OLYMPUS MEDICAL SYSTEMS INDIA PRIVATE LIMITED.**  
102-B, First Floor, Time Tower, M.G. Road, Gurgaon 122001, Haryana, INDIA

**OLYMPUS KOREA CO., LTD.**  
8F Olympus Tower, 446 Bongeunsa-ro, Gangnam-gu, Seoul, 06153 Korea  
**OLYMPUS AUSTRALIA PTY. LTD.**  
3 Acacia Place, Notting Hill VIC 3168, Australia  
**OLYMPUS SINGAPORE PTE LTD.**  
491B River Valley Road, #12-01/04 Valley Point Office Tower, Singapore 248373  
**OLYMPUS (CHINA) CO., LTD.**  
10F, K. Wah Centre, 1010 Huai Hai Road (M), Xuhai District, Shanghai, 200031 P.R.C.