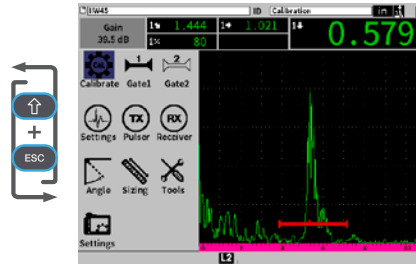


EPOCH 6LT User Interface Quick Guide



Inspection Mode

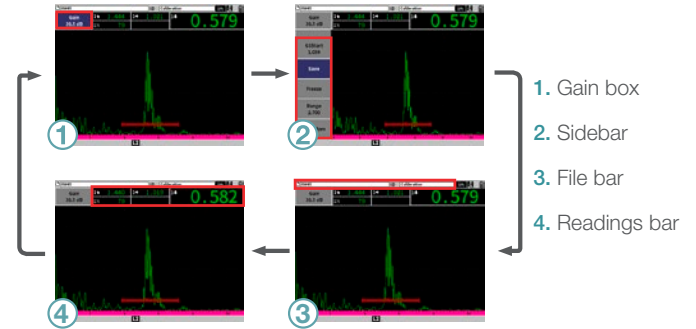
- Displays the full screen A-scan. Important UT settings can be quickly changed during inspection.



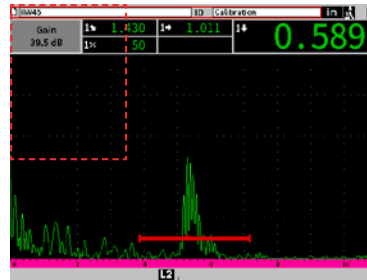
Setup Mode

- Displays the split screen A-scan and setup menu for further parameter adjustment.

→ **Tab** moves to the next highlighted parameter and cycles through the options in the current mode. This includes:



↵ **Enter** displays a shortcut menu, selects the highlighted parameter or confirms action.



ESC **ESC** jumps up a level from the current screen

⇧ **Shift** activates the second function of a key.

+ **Tab** = **Home** returns you to Inspection mode, customizable by user.

+ **Enter** = **±** toggles between coarse and fine adjustment.

+ **ESC** = **Full Screen** toggles between Inspection and Setup mode.