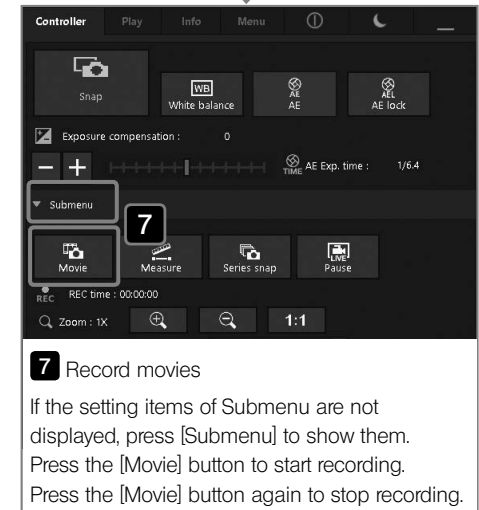
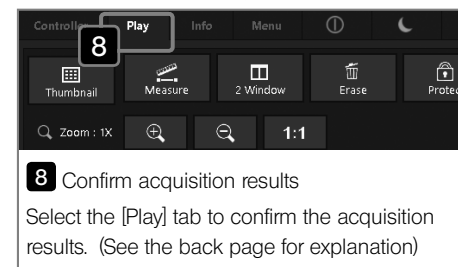
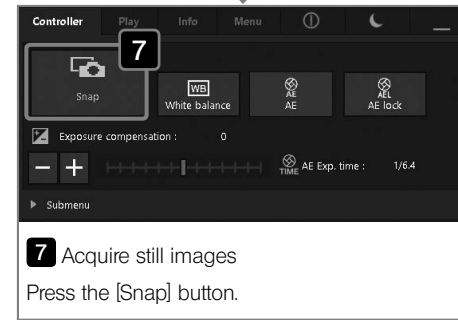
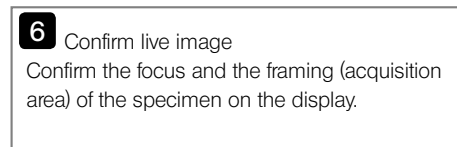
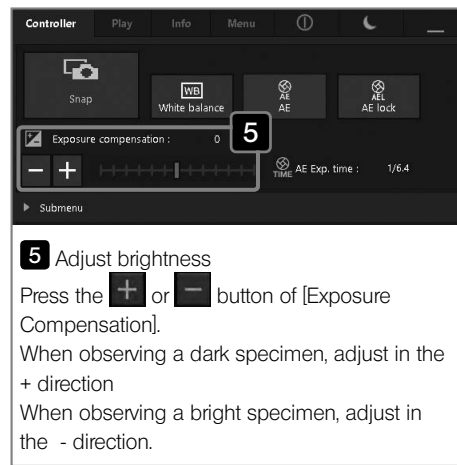
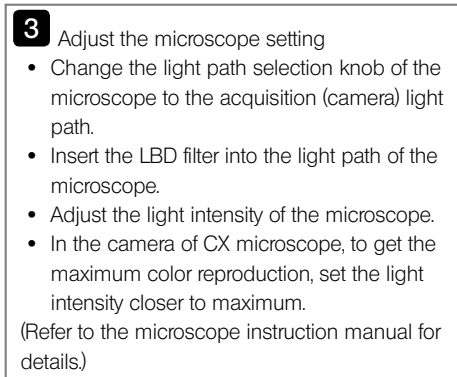
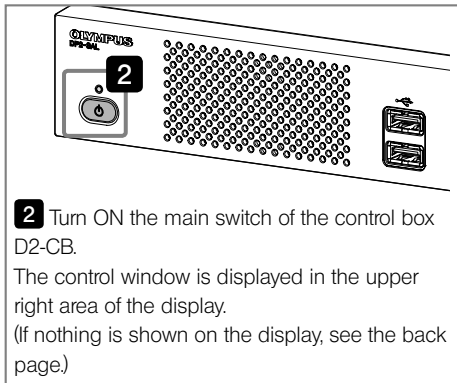
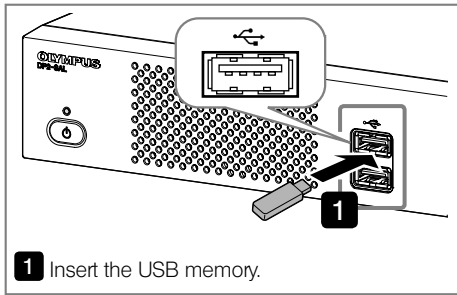


DP2-SAL Quick Operation Manual - Acquisition -

Acquisition procedures



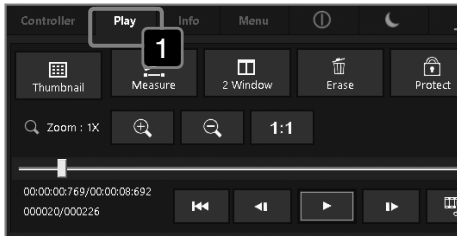
Frequently used shortcut keys

Function	Shortcut keys
Acquire still images	Double-click (double-tap) on the live image. [F8] key *
Acquire movies	[Shift]+[F8] key *
Exit camera control software and display Windows® desktop	[Ctrl]+[Alt]+[End] key *

* The keyboard must be connected for these operations.

DP2-SAL Quick Operation Manual - Play -

Play procedures



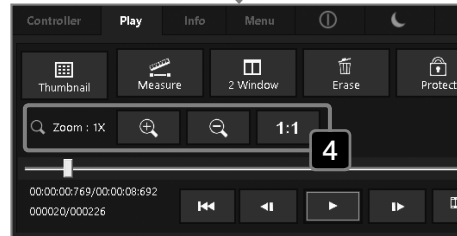
1 Display the [Play] tab.
Select the [Play] tab.



2 Display thumbnail.
Press the [Thumbnail] button.

3 Select files
Select the file you want to display from the thumbnail in the lower area of the display.

- Icons displayed in the thumbnail
 - : Protected image
 - : Movie file



4 Display zoom
Change the zoom by pressing [Zoom in], [Zoom out] or [Actual size] button.



5 Delete files.
Select the thumbnail in the lower area of the display and press the [Erase] button.

Main factory default settings

- Still image resolution: 1920 x 1440 (DP22)
2448 x 1920 (DP27)
- Exposure compensation: ± 0
- White balance: Auto
- AE area: Spot 30%
- AE mode: Auto
- Sharpness: Normal
- ISO sensitivity: 200 (DP22), 100 (DP27)
- Image color: High fidelity
(Refer to the DP2-SAL instructions for details.)

Shutdown and Sleep

Button	Function
	The system shuts down and the main switch of the control box D2-CB is turned OFF.
	DP2-SAL is in a sleep status (Operations are paused). In the sleep status, if you click the mouse or touch the touch panel display, DP2-SAL resumes operations immediately.

Show/Hide control window

Button	Function
	The control window is hidden.
	The control window is shown again. (Upper right area of the display)



Protect (delete-prohibited)

Pressing this button after selecting any image enables to protect (prohibit to delete) the selected image. Press this button again to cancel the protection.

CAUTION

Protected images () cannot be deleted.
(Delete images after canceling the protection.)

Playing movies

To play the movie file () use these buttons.

Button	Function
	Back to top.
	Back to previous frame.
	Play/Pause
	Go to next frame.
	Extract current frame as the image.

When nothing is shown on the display:

Connect the keyboard to the control box and press the main switch of the control box D2-CB while pressing [Alt] + [M] keys. Then you can use DP2-SAL with XGA(1024x768). Please try this.