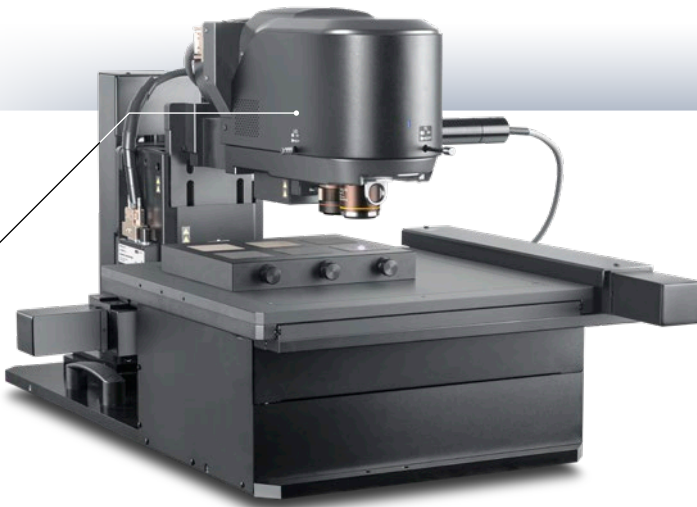


Customized DSX1000 Digital Microscope Models

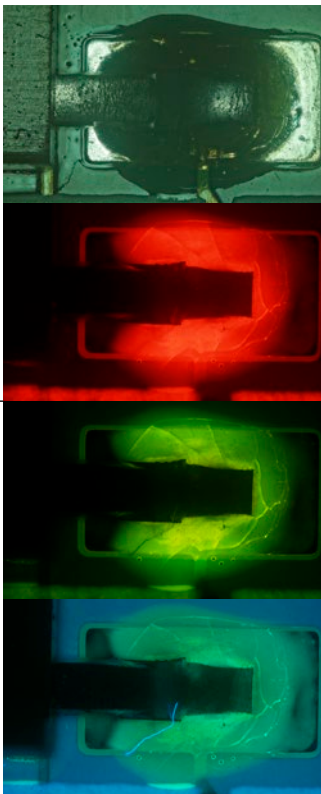
Customize the DSX1000 to Suit Your Needs



Upright frame – For high magnification up to 50x



Tilting frame – Observe from ± 90



Fluorescence zoom head

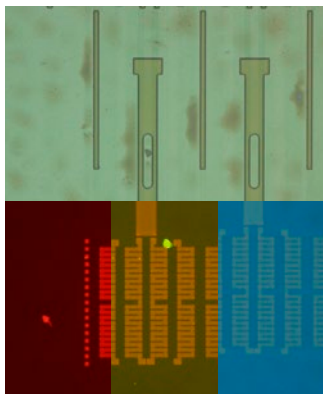
- Large motorized stages
- Extended focus for tall samples
- Transmitted illumination
- Fluorescence observation
- Motorized sliding nosepiece

DSX1000 Digital Microscope Models

Customize the DSX1000 to Suit Your Needs

		Upright frame system			Tilting frame system		
Overview		Stable frame for high-magnification observation			Flexible frame with tilting of ± 90 degrees (left-right)		
Zoom head		Universal zoom head Standard zoom head Fluorescence zoom head			Universal zoom head Standard zoom head		
Height adjustment Z stroke		95 mm	Motorized (fine focus)	95 mm	295 mm	Motorized (fine focus)	95 mm
			No manual focus			Manual (coarse focus)	
Objective magnification		1X–50X			1X–10X (recommended)		
Sample height	Upright observation	Objective	Sample Height		Objective	Sample Height	
		UIS2	0–235 mm		UIS2	0–295 mm	
		DSX-XLOB	0–205 mm		DSX-XLOB	0–265 mm	
		DSX-SXLOB	0–140 mm		DSX-SXLOB	0–200 mm	
	Tilting observation	–		0–200 mm			
Applications		Semiconductors, flat panel displays (FPDs), thin films, MEMS, LED devices			Automotive parts, semiconductors, mounted electronic boards		
Other features		<ul style="list-style-type: none"> · Mirror cubes for UV, blue, and green excitation (fluorescence zoom head) · Customized mirror cubes available on request (fluorescence zoom head) · Transmitted light observation (depends on stage) · Motorized sliding nosepiece (only for upright frame) 					

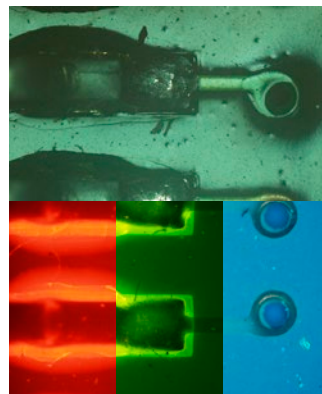
Typical Applications



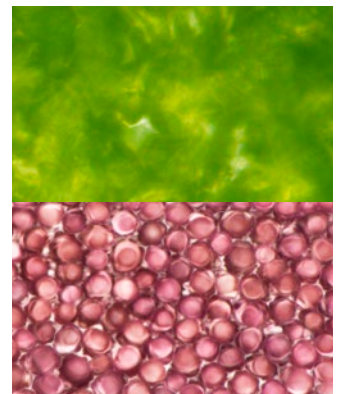
Wafer inspection



Inspection of large automotive parts



Circuit board inspection



Life science inspection (flowers, leaves, insects)

Customize Your DSX1000 Digital Microscope

The versatile DSX1000 digital microscope can easily be customized to better suit your inspection needs.

Inspect Samples of All Sizes

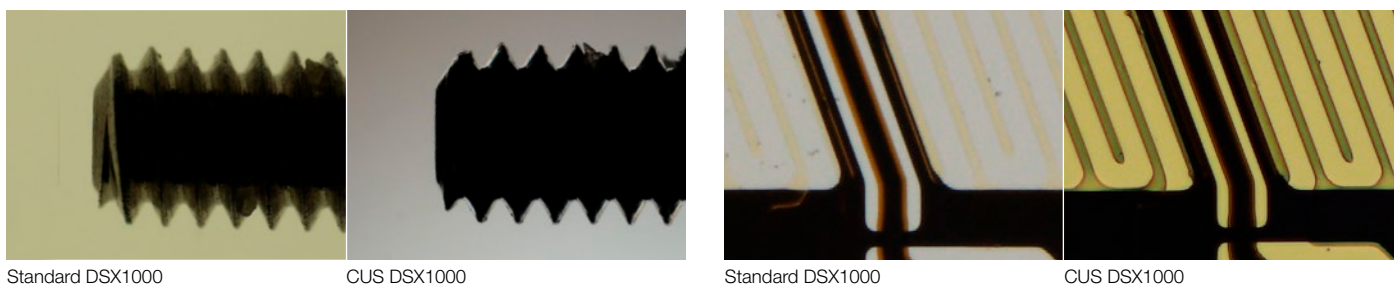
The customized DSX1000 digital microscope is available with a range of large motorized and manual stages—for example, 200 mm and 300 mm stages—and an XY range that varies from 150 to 300 mm. These stages enable inspection of large samples, such as 12-inch wafers, heavy automotive parts, glass specimens, large circuit boards, and other electronic components. Heavy-duty stages are also available for samples of up to 30 kg (66 lb).

A Clear View of Tall Samples

Inspection of tall samples with heights of up to 295 mm—for example, automotive parts such as crankshafts or surgical equipment such as endoscope probes—is easy with the customized DSX1000 microscope. Both the tilting and upright frames have a motorized focus of 95 mm, and the tilting frame also has a manual focus of 200 mm. To observe even taller samples, the customized DSX1000 digital microscope can also be used without a stage to observe samples up to 475 mm in height.

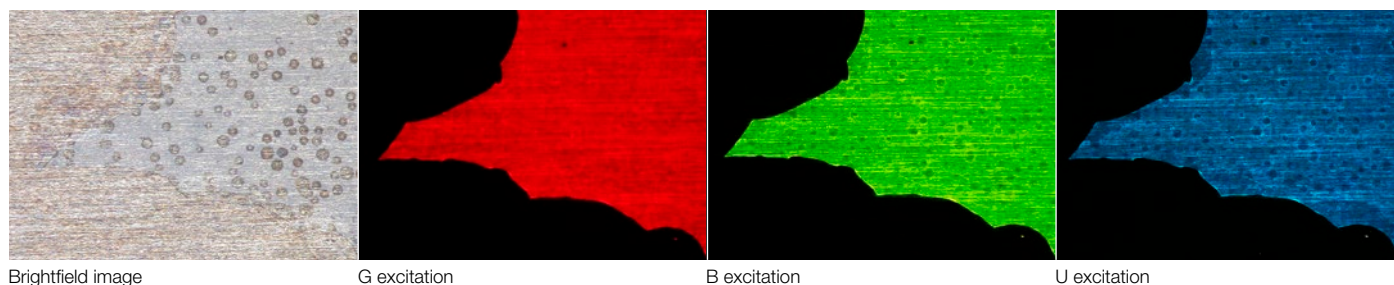
Sharp Images with Transmitted Illumination

The customized DSX1000 digital microscope is available with an advanced transmitted light condenser. This condenser provides a higher contrast and a sharper image compared to the standard DSX1000 microscope.



See More with Fluorescence

Combine the advantages of digital microscopy and fluorescence observation for enhanced inspection of silicon wafers, circuit boards, and resins, as well as many life science applications. The customized DSX1000 microscope's fluorescence zoom head is normally used with three standard filter cubes (UV, blue, and green excitation), but other filter cubes are also available.



Motorized Nosepiece for Easy Operation

For easy operation, especially useful when working long hours at the microscope, a motorized sliding nosepiece can be added. With this setup, it becomes easier to switch between objectives without interrupting the observation workflow.

DSX1000 Configurations

Upright Frame Configurations

		Universal Zoom Head		Standard Zoom Head			Fluorescent Zoom Head		
		Standard	Transmitted Light	Standard	Transmitted Light	Motorized Sliding NP	Standard	Transmitted Light	Motorized Sliding NP
Zoom Head	DSX10C-UZH (N9050184) Universal zoom head for DSX1000-AC	•	•	–	–	–	–	–	–
	DSX10C-SZH (N9050186) Standard zoom head for DSX1000-AC	–	–	•	•	–	–	–	–
	DSX10C-SZH-A (N9050187) Standard zoom head + mot. sliding NP	–	–	–	–	•	–	–	–
	DSX10C-RF (N9050182) Fluorescence zoom head	–	–	–	–	–	•	•	–
	DSX10C-RF-A (N9050183) Fluorescence zoom head + mot. sliding NP	–	–	–	–	–	–	–	•
Frame	DSX10C-UF (N9050189) Upright frame	•	•	•	•	•	•	•	•
Converter	DSX10C-PRCV-1 (N9050196) Protocol converter	•	•	•	•	–	•	•	–
	DSX10C-PRCV-1-A (N9050197) Protocol converter for mot. sliding NP	–	–	–	–	•	–	–	•
Stage	DSX10C-MH150 (N9050192) Stage adapter for 150 mm stage	•	•	•	•	•	•	•	•
	M-MS-MX51-4 (E0430766) 150 mm motorized stage								
	DSX10C-MH200 (N9050193) Stage adapter for 200 mm stage	•	•	•	•	•	•	•	•
	M-MS-MX61-4-2 (E0438244) 200 mm motorized stage								
	DSX10C-MH300 (N9050194) Stage adapter for 300 mm stage	•	–	•	–	•	•	–	•
	M-MS-CUS-300x300-4 (E0433706) 300 mm motorized stage								
Add-On Components	DSX10C-LAXL (N9050198) Lens adapter for mot. sliding NP	–	–	–	–	•	–	–	•
	DSX10C-LAUIS (N9050199) Lens adapter for mot. sliding NP	–	–	–	–	•	–	–	•
	MX-TILLK (N1562200) Transmitted light adapter	–	•	–	•	–	–	•	–
	LG-SF (38363) Transmitted light adapter	–	•	–	•	–	–	•	–
	KL1600LED-2 (E0433314) Transmitted light adapter	–	•	–	•	–	–	•	–
	U-HGLGPS (N4224900) U-LLG150 (N4226700) FL light source + Fiber	–	–	–	–	–	•	•	•

Please refer to the CUS catalogue in SharePoint for manual stages, latest products, and configurations.

Required Components

DSX10-CB (N5736800) Control box	DP74-PCIE-1-2 PCI board (N5739900) Control board	DSX10-BSW (N5737000) Basic software	HW-WORKSTATION-HP-Z2G4-DSX1000 (E9701478) PC
---	--	---	--

Group	Objective	Upright Frame	Tilting Frame	Fl. Zoom Head
SXL Series Super long working distance	DSX10-SXLOB1X	•	•	–
	DSX10-SXLOB3X	•	•	–
	DSX10-SXLOB10X	•	•	–
XL Series High resolution / long working distance	DSX10-XLOB3X	•	•	*
	DSX10-XLOB10X	•	•	*
	DSX10-XLOB20X	•	–	*
	DSX10-XLOB40X	•	–	*

• available – not available * special cases

Tilting Frame Configurations

		Universal Zoom Head		Standard Zoom Head	
		Standard	Transmitted Light	Standard	Transmitted Light
Zoom Head	DSX10C-UZH (N9050184) Universal zoom head for DSX1000-AC	•	•	–	–
	DSX10C-SZH (N9050186) Standard zoom head for DSX1000-AC	–	–	•	•
	DSX10C-SZH-A (N9050187) Standard zoom head + mot. sliding NP	–	–	–	–
Frame	DSX10C-TF (N9050188) Tilting frame	•	•	•	•
Converter	DSX10C-PRCV-1 (N9050196) Protocol converter	•	•	•	•
Stage	DSX10C-MH150 (N9050192) Stage adapter for 150 mm stage + M-MS-MX51-4 (E0430766) 150 mm motorized stage	•	•	•	•
	DSX10C-MH200 (N9050193) Stage Adapter for 200 mm stage + M-MS-MX61-4-2 (E0438244) 200 mm motorized stage	•	•	•	•
	DSX10C-MH300 (N9050194) Stage adapter for 300 mm stage + M-MS-CUS-300x300-4 (E0433706) 300 mm motorized stage	•	–	•	–
Add-On Components	MX-TILLK (N1562200) Transmitted light adapter	–	•	–	•
	LG-SF (38363) Transmitted light adapter	–	•	–	•
	KL1600LED-2 (E0433314) Transmitted light adapter	–	•	–	•

Please refer to the CUS catalogue in SharePoint for manual stages, latest products, and configurations.

HW-TFT-23-DELL-P2319H (E9701492) Monitor	UYCP (35425) Power cord	M-CBL200AP-2 (E0433870) Motor cable	M-CU-DT-2 (E0438472) Tango 2-axis desktop control unit	M-HID-JS-2 (E0438481) Joystick
--	-----------------------------------	---	--	--

Group	Objective	Upright Frame	Tilting Frame	Fl. Zoom Head
UIS Series High performance / high numerical aperture	MPLFLN5XBDP	•	•	•
	MPLFLN10XBDP	•	•	•
	MPLFLN20XBDP	•	–	•
	MPLFLN50XBDP	•	–	•
	MPLAPON50X	–	–	–
	LMPLFLN10XBDP	•	•	•
	LMPLFLN20XBDP	•	–	•
	LMPLFLN50XBDP	•	–	•

Customize the DSX1000 to Suit Your Needs

DSX1000 System Diagram

