

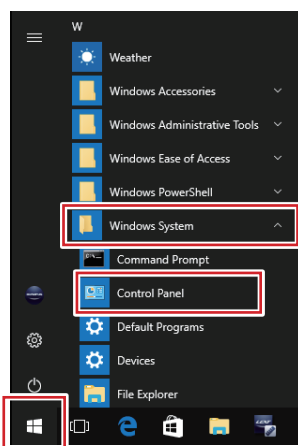
These procedures are described using the screens of Windows 10.

1 Create a system image

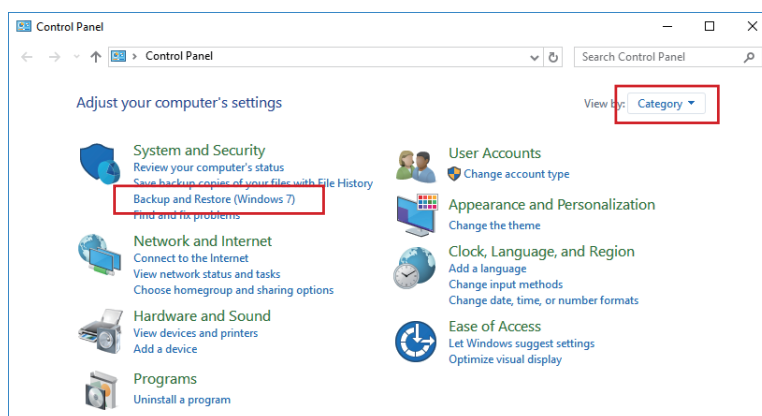
Before you start:

If the PC has only one drive, prepare a recording medium such as an external HDD or DVD.

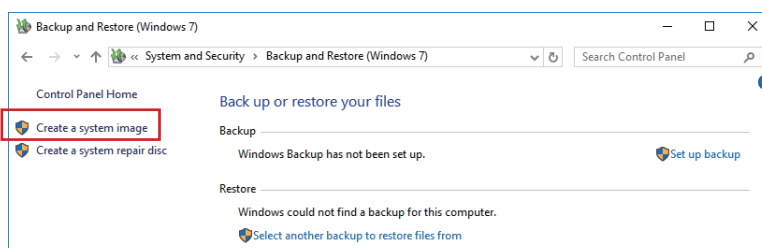
- 1 Click [Start] to display a list of applications.
Click [Windows System] in the [W] column and click [Control Panel].
For Windows11, click [Search], type "Control Panel", and click [Open].



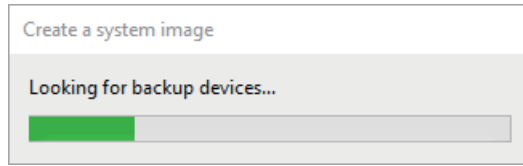
- 2 The [Control panel] screen is displayed.
Set [Display method] to [Category].
* Click [Backup and Restore (Windows 7)] in the [System and Security] category.



- 3 The [Backup and Restore (Windows 7)] screen is displayed.
Click [Create a system image].

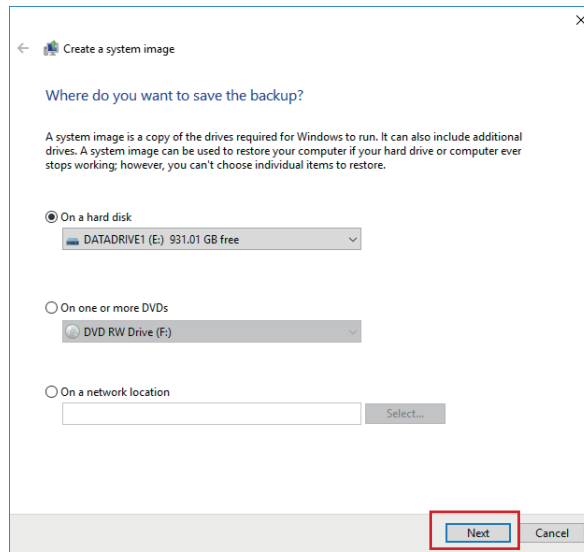


4 When the message [Looking for backup devices ...] is displayed, wait for a while.



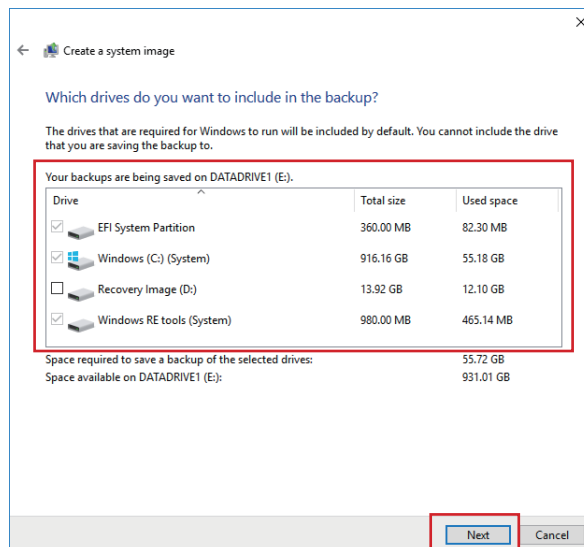
5 The [Create a system image] screen is displayed.

If you save the system image on the drive inside the PC or external HDD, click [On a hard disk].
If you save the system image on DVD, click [On one or more DVDs].
And then, click [Next].



6 If the selection screen of the drive to be copied is displayed, check the drives that you want to include in the backup, and click [Next].

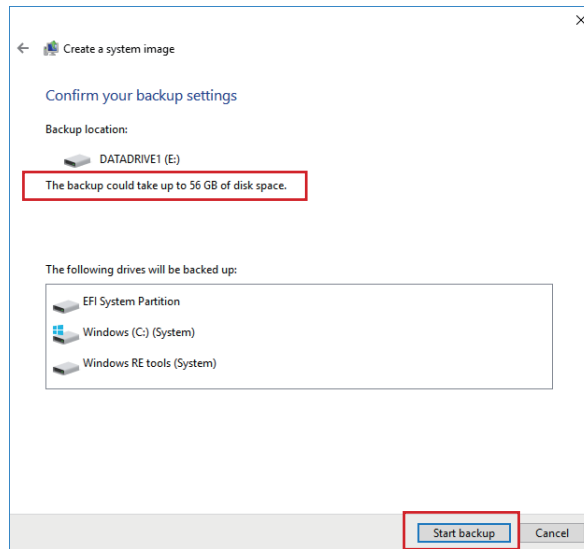
* You cannot uncheck the checkboxes of drives that are required to run Windows.



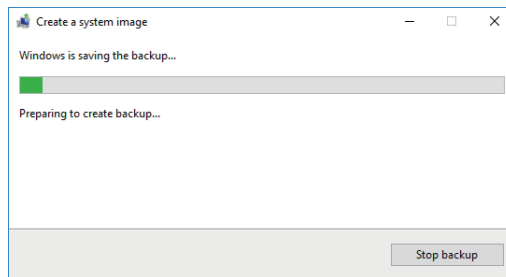
7 Make sure of the disk space required for the system image.

Click [Start backup].

* If you create the system image in the medium such as DVD or Blu-ray disc, prepare the disk with sufficient capacity.

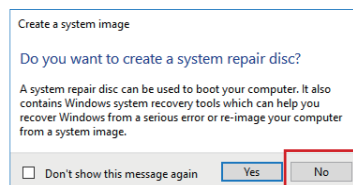


8 When the message [Windows is saving the backup ...] is displayed, wait for a while.



9 The message [Do you want to create a system repair disc?] is displayed.

Click [No].



2 Restore from a system image

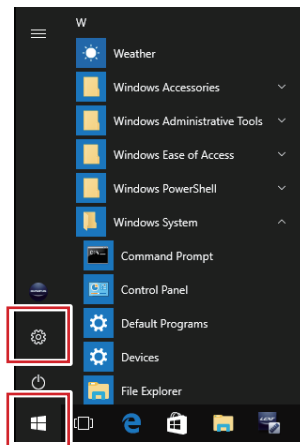
NOTE

Please see the following precautions before restoring your PC by using the system image.

- If the PC shuts down during restoration, the PC may not start properly.
- With the restoration using the system image, you cannot individually select and restore only desired items of the drive.
- If the PC is restored, the data saved in the PC after creating the system image will be deleted.

1 Click [] to display a list of applications.

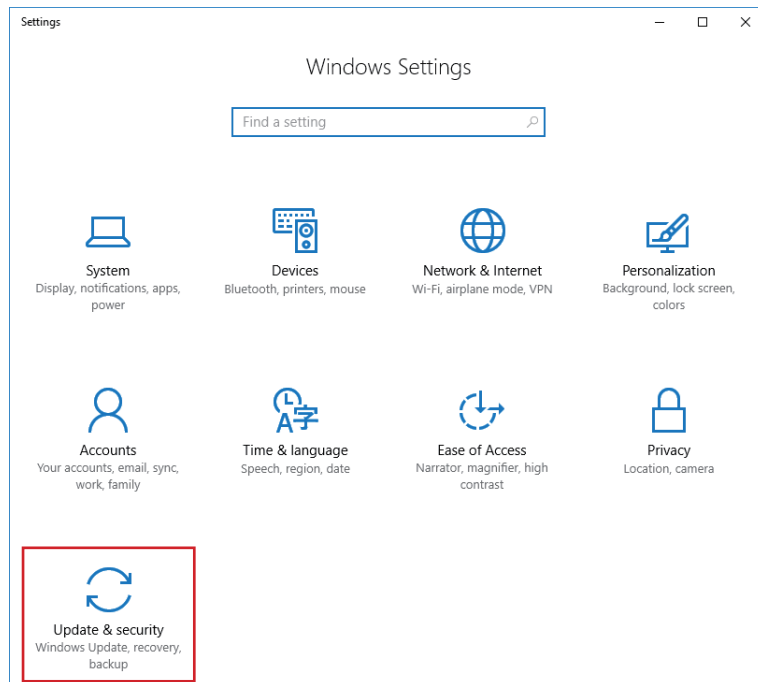
Click [].



2 The [Settings] screen is displayed.

Click [Update & security].

For Windows11, click [Windows Update], then click [Advanced options].

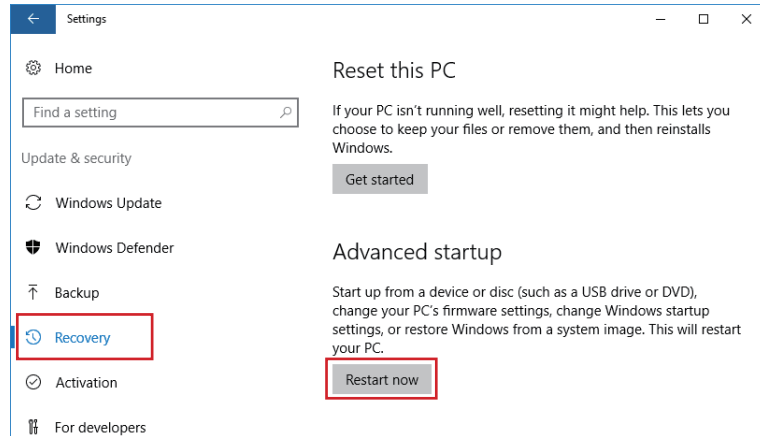


3 The [Update & security] screen is displayed.

Click [Recovery] in the left side of the screen.

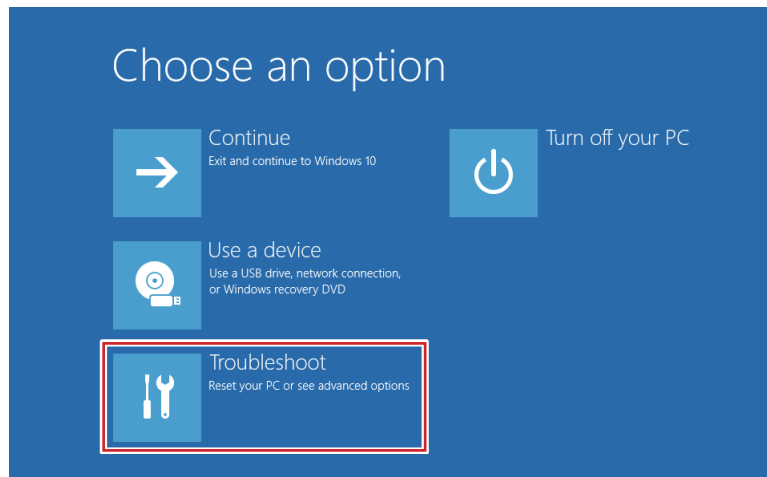
Click [Restart now] in the [Advanced startup] category.

For Windows11, click [Recovery], then click [Restart now].



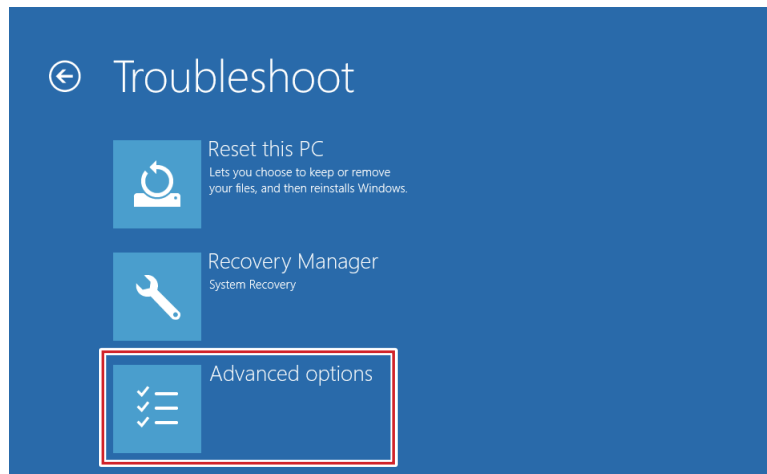
4 The [Choose an option] screen is displayed.

Click [Troubleshoot].



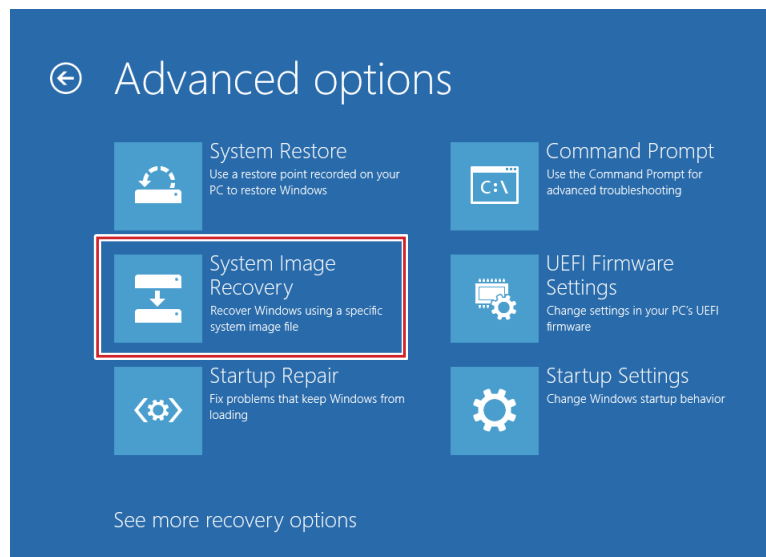
5 The [Troubleshoot] screen is displayed.

Click [Advanced options].



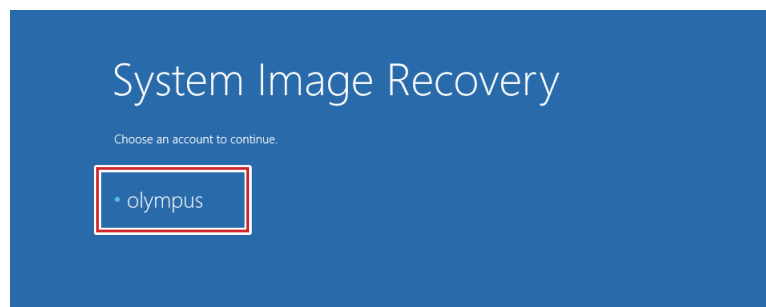
6 The [Advanced options] screen is displayed.

Click [System Image Recovery].



7 Wait until the [System Image Recovery] screen is displayed.

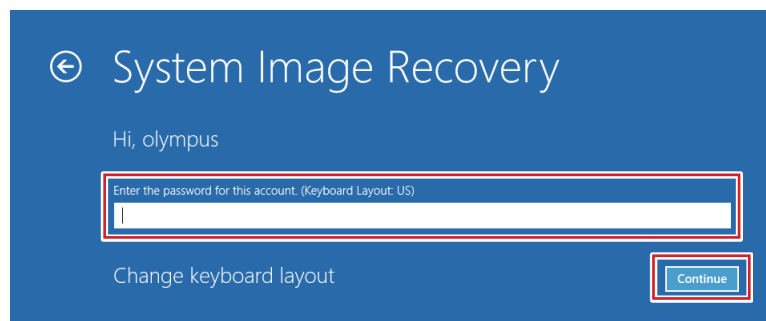
Click the account.



8 The selected account name is displayed.

Enter the password in the [Enter the password for this account] box and click [Continue].

Use the password explained by EVIDENT at the time of delivery or described in the instruction manual of the product.



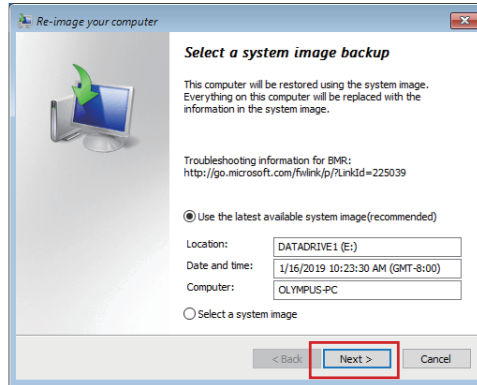
* If you want to change the input language, click [Change keyboard layout] and select the desired input method.

9 The [Select a system image backup] screen is displayed.

If you select the system image saved on the drive inside the PC or external HDD, click [Use the latest available system image (recommended)].

If you select the system image saved on DVD, click [Select a system image].

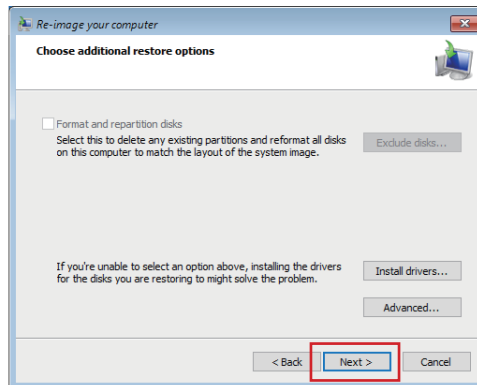
And then, click [Next].



10 If you clicked [Select a system image] in Step 9, follow the displayed screen to select the system image of the date and time you want to restore, and click [Next].

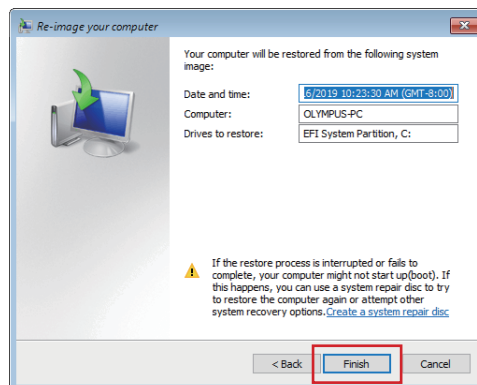
11 [Choose additional restore options] screen is displayed.

Click [Next].



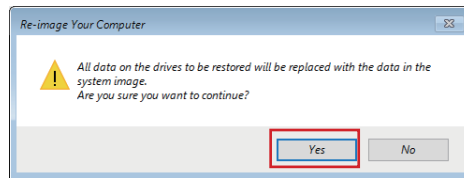
12 The [Your computer will be restored from the following system image] screen is displayed.

Make sure of the creation date and time of the system image to use for restoration, the name of the PC to create and the location of the drive to restore, and then click [Finish].



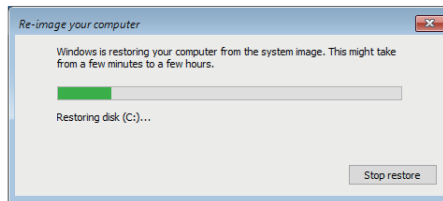
- 13 The [All data on the drives to be restored will be replaced with the data in the system image. ...] screen is displayed.

Click [Yes].



- 14 The [Windows is restoring your computer from the system image. ...] screen is displayed.

Restoration of the selected drive starts. Wait for a while.



NOTE

If you click [Stop restore], the restoration is interrupted. However, avoid doing so unless there is some particular reason. Otherwise the drive or system may be damaged and the PC cannot be used properly.

- 15 The PC will restart.