

Digital camera for microscope, DP25: Notice for Sleep Mode of Windows Vista/XP

We found that the digital camera DP25 for microscope has not supported to “sleep mode”※ of Windows Vista and Windows XP.

At this time, we prepared the update program to support “sleep mode”, Please kindly update the DP25 camera driver using this program.

【Object Product】

DP25 in combination with the following version's TWAIN interface and DP2-BSW.

- DP2-BSW Ver.1.2, Ver.1.3, Ver.1.4 and Ver.2.1
- DP25TWAIN Ver.1.1, Ver.1.2 and Ver.1.4
- DP2-TWAIN Ver.2.1

【Defect Phenomenon】

When Windows Vista and Windows XP enter sleep mode under the status that has connected DP25 to your PC, the PC cannot resume normally.

Although there is no impact to images saved, all data before saved are deleted. Please note that data, which is editing under the other application software, is also not saved.

【Defect Factor】

Since the DP25 camera driver does not support “sleep mode” of Windows Vista and Windows XP, this defect occurs.

【Solution】

The defect can be solved when you update the DP25 camera driver by using this program.

※ In this document, sleep mode indicates “sleep/hibernate mode” in Windows Vista, and “standby/hibernate mode” in Windows XP.

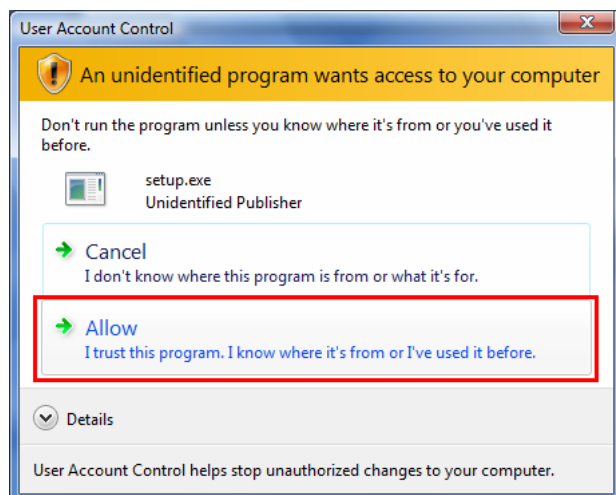
Before updating your camera driver

Please pay attention to the following when you update.

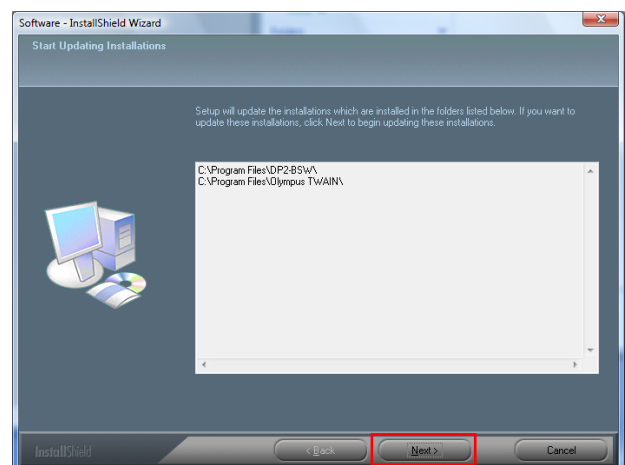
- The software cannot be installed unless the user account is registered as “Computer Administrator”, if the user account is registered as a “Restricted Account”, change it to the “Computer Administrator” account. (For the user account registration, refer to the instruction manual for your PC.)
- Please exit from all running applications before you update. Also, please exit from the resident applications such as the antivirus software.
- Please make the screen saver and all power saving functions invalid before updating. Also, please avoid the standby mode during operations.
- Please plug off IEEE1394 cable of DP25 from your computer.

Update of camera driver (for Windows Vista)

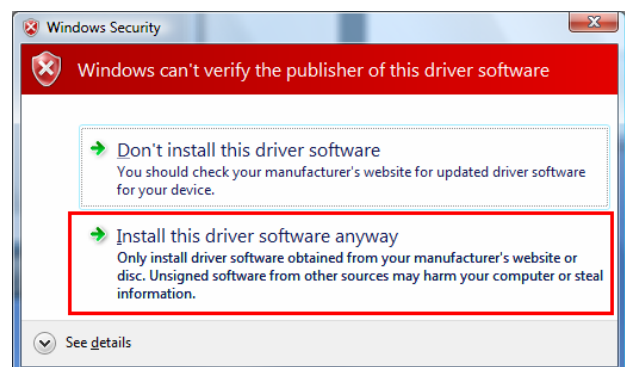
- (1) Doubleclick [Setup.exe](#) in the new folder created after unzipping the update program download. The update starts.
- (2) The [User Account Control](#) dialog box will appear. Click the [\[Allow\]](#) button.



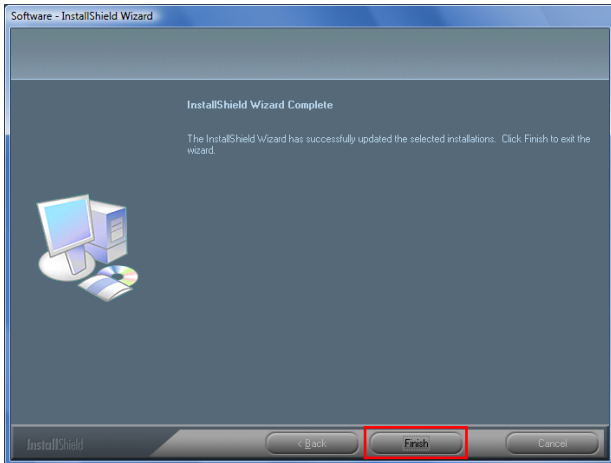
- (3) A list of DP25 control software that is installed on your PC will be displayed. Click the [\[Next\]](#) button to start the update.



- (4) The [Windows Security](#) dialog box will appear. Click [Install](#) this driver software anyway.



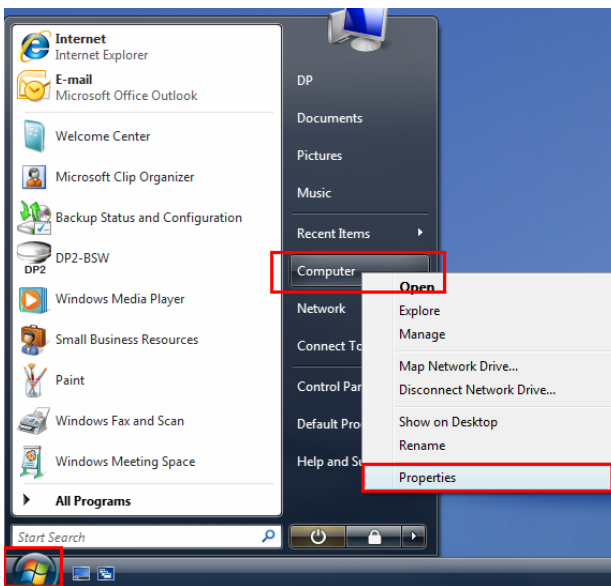
- (5) When the dialog box appears as below, click the [Finish] button. The software update for the camera driver has been completed.



As the next step, connect DP25 to your PC and verify the updated driver's version number.

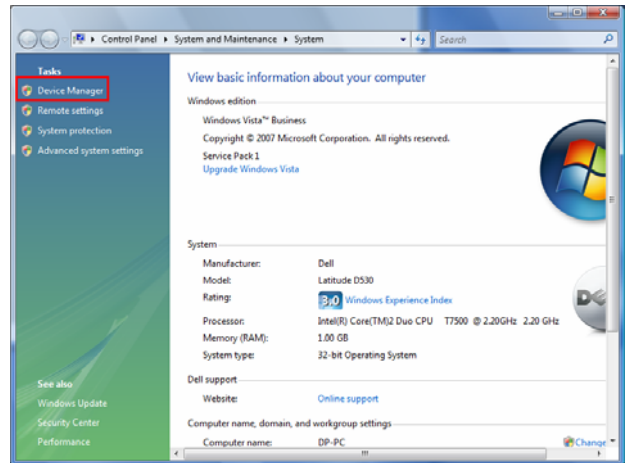
Please connect DP25 to your PC.

- (6) Click the [Start] button, rightclick the Computer command, and leftclick the Properties command from the context menu.

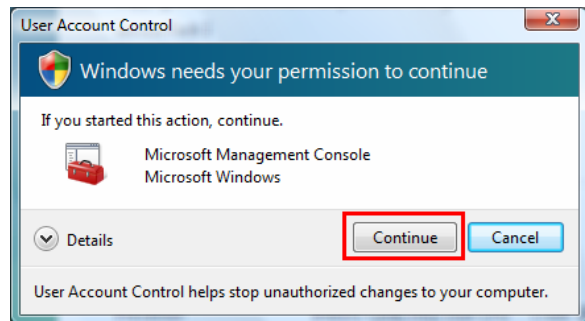


- (7) The following dialog box will appear. Click the Device

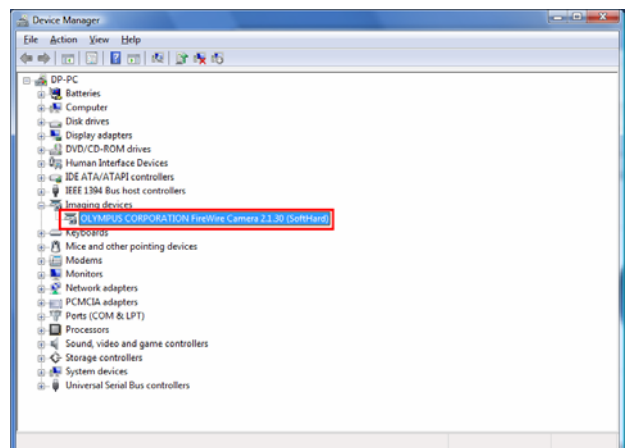
Manager.



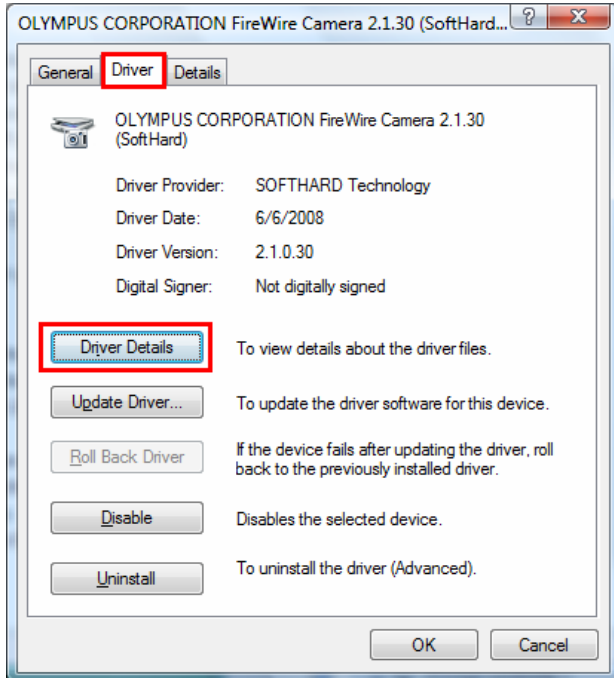
- (8) The User Account Control dialog box will appear. Click the [Continue] button.



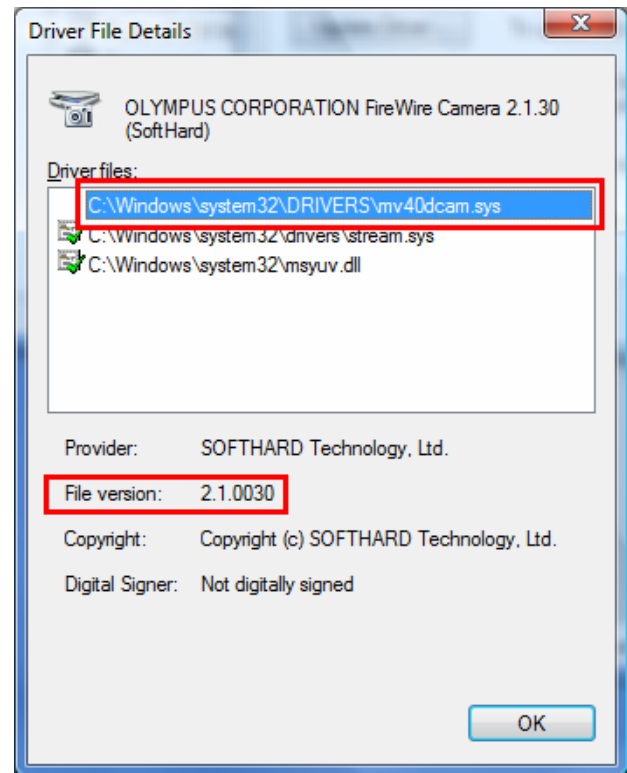
- (9) The Device Manager dialog box will appear. Doubleclick OLYMPUS CORPORATION, camera core developed by SOFTHARD Technology under the Imaging Device branch.



(10) Click the [Driver Details] button in the Driver tab of Device Manager.



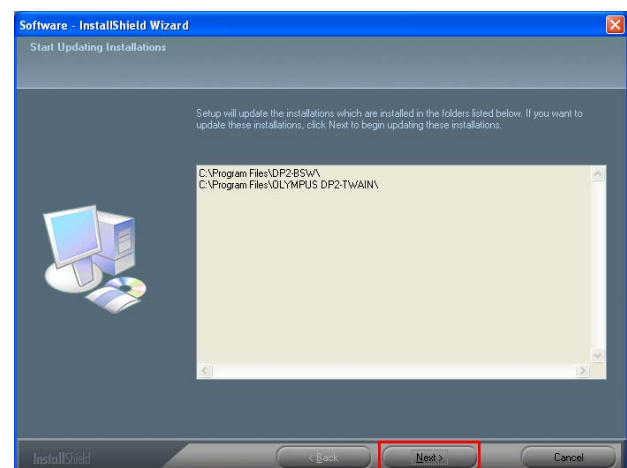
(11) Select mv40dcam.sys and confirm the file version. If you can see that file version is 2.1.0030, the update has been properly executed.



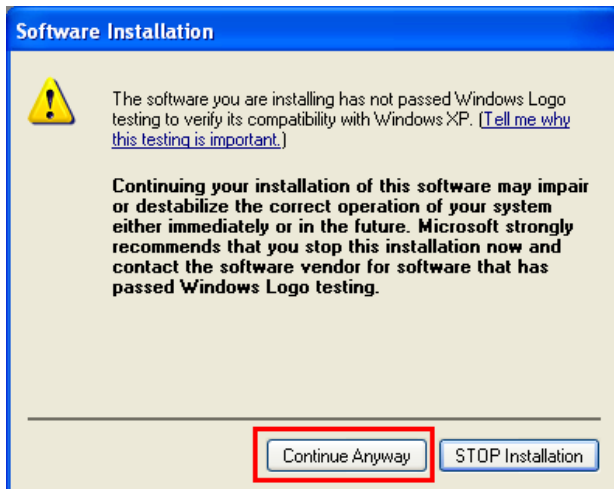
With that, operation is completed.

Update of camera driver(for Windows XP)

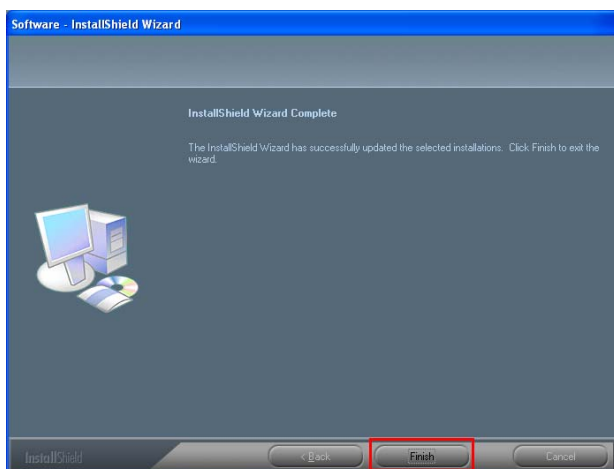
- (1) Doubleclick `Setup.exe` in the new folder created after unzipping the update program download. The update starts.
- (2) A list of DP25 control software that is installed on your PC will be displayed. Click the [Next] button to start the update.



- (3) The **Software Installation** dialog box will appear. Click the **[Continue Anyway]** button.



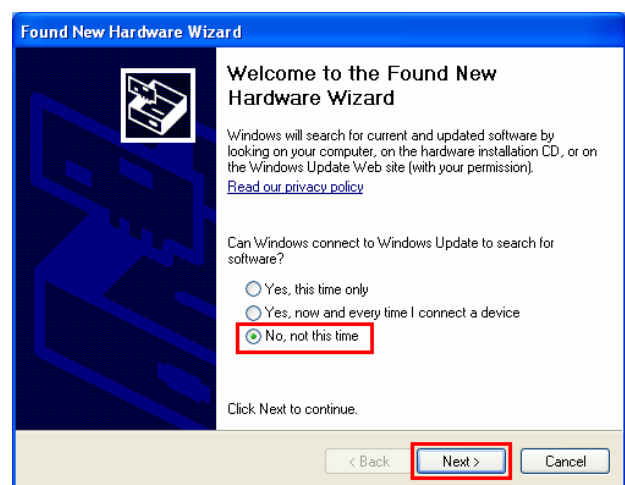
- (4) When the dialog box appears as below, click the **[Finish]** button. The software update for the camera driver has been completed.



Next, connect DP25 to your PC and verify the driver's version number.

Please connect DP25 to your PC.

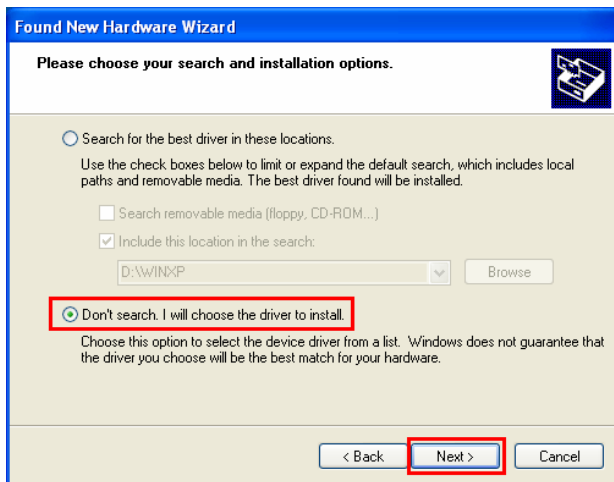
- (5) After updating the camera driver, when you connect DP to your PC first, the **Found New Hardware Wizard** dialog box starts. Select **No, not this time**, and click the **[Next]** button.



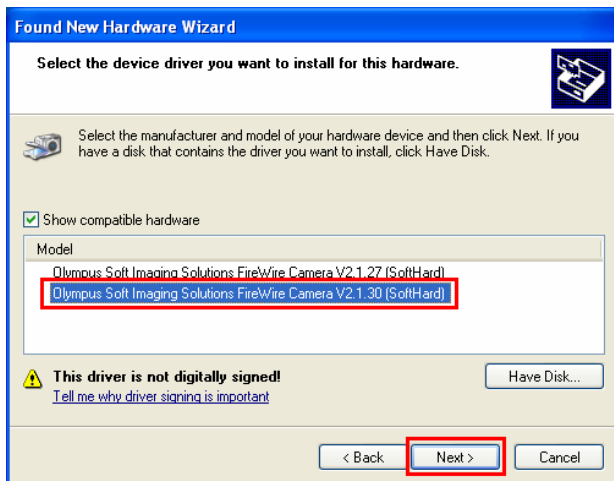
- (6) The following dialog box will appear. Select **Install from a list or specific location (Advanced)**, and click the **[Next]** button.



- (7) Select **Don't search, I will choose the driver to install**, and click the **[Next]** button.



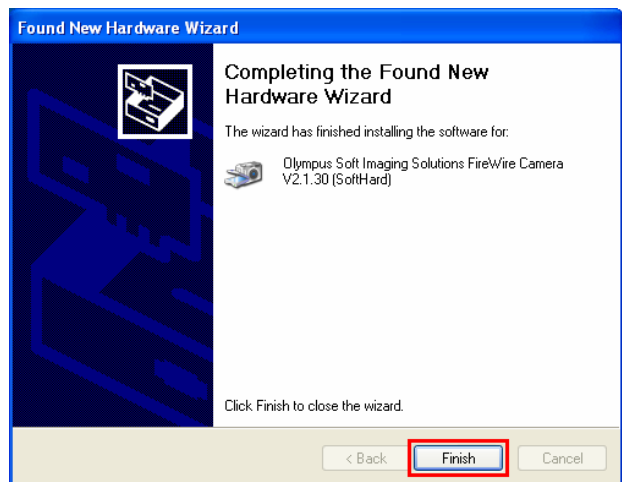
- (8) Select **Olympus Soft Imaging Solutions FireWire Camera V2.1.30**, and click the **[Next]** button.



- (9) The **Hardware Installation** dialog box will appear. Click the **[Continue Anyway]** button.

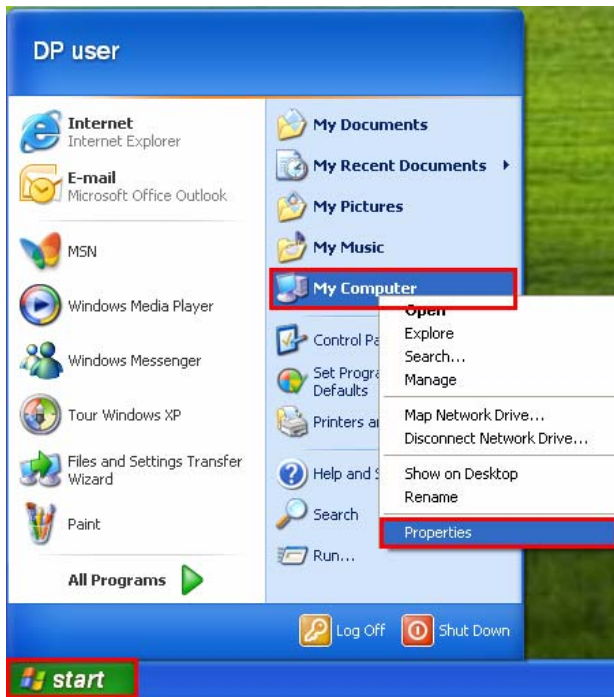


- (10) Click the **[Finish]** button to complete the **Found New Hardware Wizard** dialog box.

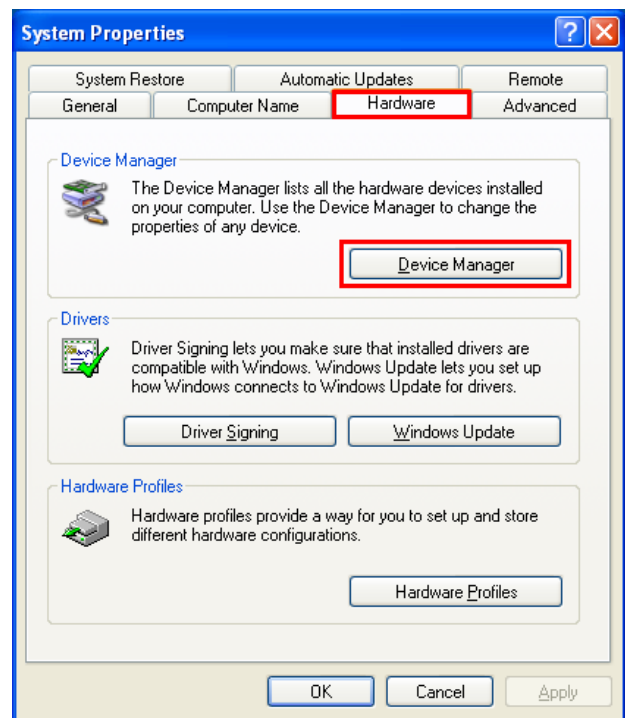


As the next step, verify the updated driver's version number.

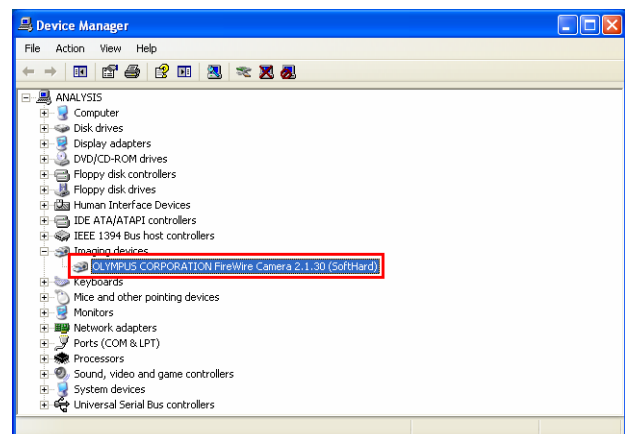
- (11) Click the [Start] button, rightclick the **My Computer** command, and leftclick the **Properties** command.



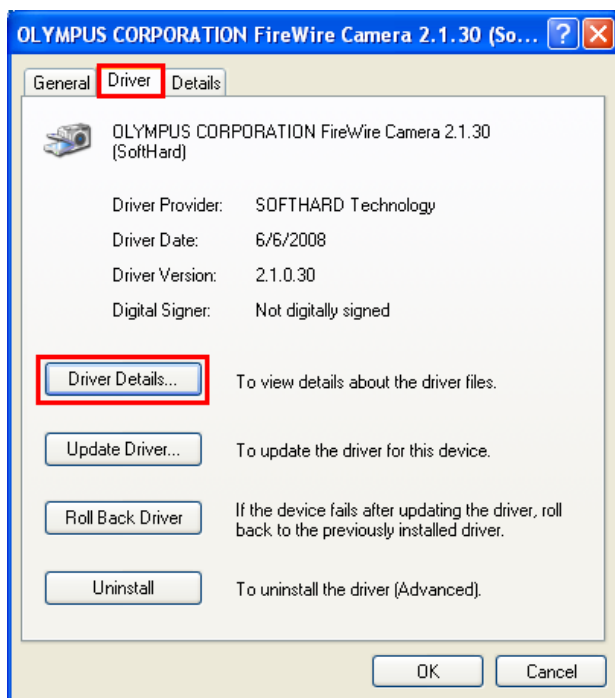
- (12) The **System Properties** dialog box appears. Click the [Device Manager] button in the **Hardware** tab.



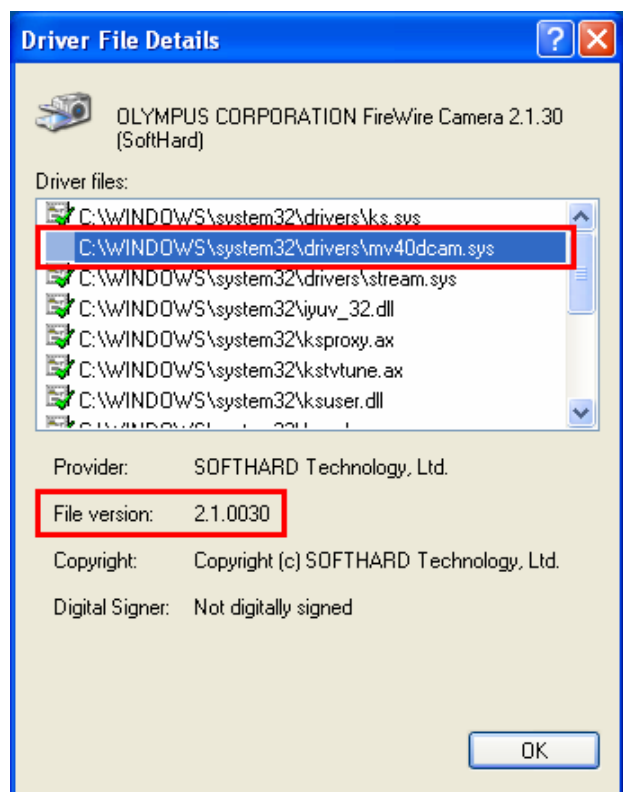
- (13) The **Device Manager** dialog box appears. Doubleclick **OLYMPUS CORPORATION**, camera core developed by **SOFTHARD Technology** under the **Imaging Device** branch.



- (14) Click the [Driver Details] button in the **Driver** tab of the **Device Manager**.



(15) Select [mv40dcam.sys](#) and confirm the file version. If you can see that file version is [2.1.0030](#), the update has been properly executed.



With that, operation is completed.