

## For users of DP25 digital camera for microscope

Thank you for your loyal patronage.

We found the phenomenon our digital camera for microscope, DP25, cannot be detected on the computer WindowsXP SP3 is installed.

To solve this phenomenon, it needs to change your IEEE1394 device driver to the older version applying the modification program to your WindowsXP SP3 environment in use. Please follow this manual and change your IEEE1394 device driver.

### [Target product]

DP25(SN50000001 - 50000499) in combination with WindowsXP SP3.

### [Phenomenon]

DP25, which works properly on a PC (OS: WindowsXP SP2), cannot be recognized on a device manager after installing Windows XP SP3.

### [Factors]

Since DP25 does not correspond to the new IEEE1394 device driver provided by Windows XP SP3, DP25 cannot be detected.

### [Countermeasures]

Change your IEEE1394 device driver updated by WindowsXP SP3 to the older version compatible with DP25. Apply this modification program to your WindowsXP SP3 environment in use, and your device driver can be changed. Details on device driver files and their versions before/after change are as follows:

	At installation of WindowsXPSP3	After device driver change
1394bus.sys	5.1.2600.5512	5.1.2600.2532
arp1394.sys	5.1.2600.5512	5.1.2600.2180
enum1394.sys	5.1.2600.0	5.1.2600.0
nic1394.sys	5.1.2600.5512	5.1.2600.2578
ohci1394.sys	5.1.2600.5512	5.1.2600.2549

\*Even after changing IEEE1394 device driver to the older version according to this manual, the following operations make such change invalid.

- Installation of a new IEEE1394 host controller.
- Change of IEEE1394 card to other slots

In these cases, please change your IEEE1394 device driver again to the older version according to this manual.

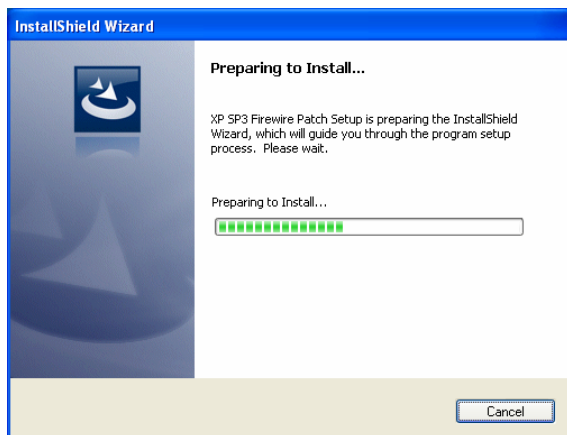
## Before changing your IEEE1394 device driver

Please note the following points in changing your device driver.

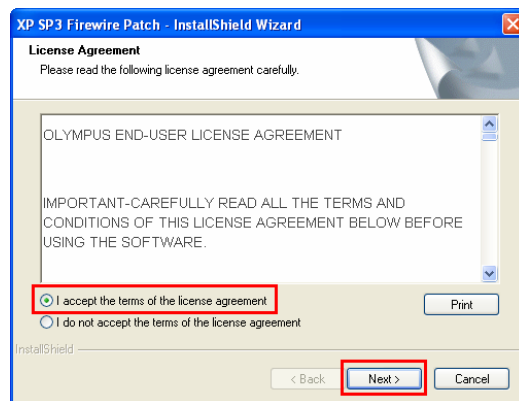
- Unless the user account registration is “Computer administrator”, the driver cannot be changed. If your account is registered as “limited account”, please ask your “Computer administrator” to change it. (For user account registration, please refer to Instruction Manual of your computer in use.)
- Please exit all applications in use before operation. Exit the resident application such as antivirus, too.
- Plug off all cables for IEEE1394 equipment like DP25 from your computer.
- Please make the screensaver and all power-saving functions invalid before operation. Avoid the stand-by mode during operation.

## Change of IEEE1394 device driver

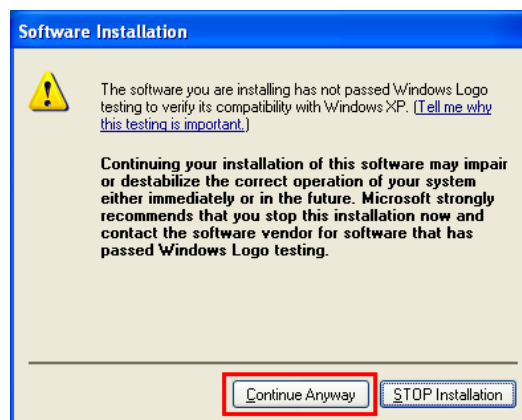
- (1) Double click “Setup.exe” in the new folder created after unzipping the modification program downloaded. Installation starts.



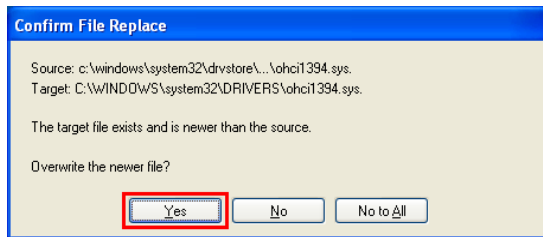
- (2) Please read the license agreement displayed.  
If you agree to the contents, select “I agree the terms of the agreement.” and click [Next] button.



- (3) The following dialog box will appear. Click [Continue Anyway] button.

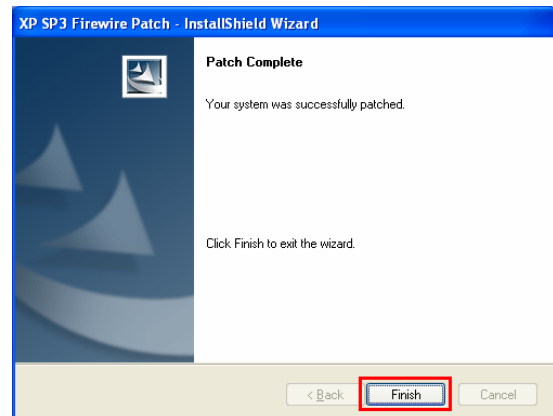


- (4) The dialog box for confirmation about file rewriting will appear. Click [Yes] button. (4 times)



If your computer equips with two or more IEEE1394 boards, the dialog box in (3) will appear again. In such a case, click [Continue Anyway] button.

- (5) The following dialog box will appear. Your device driver was changed.

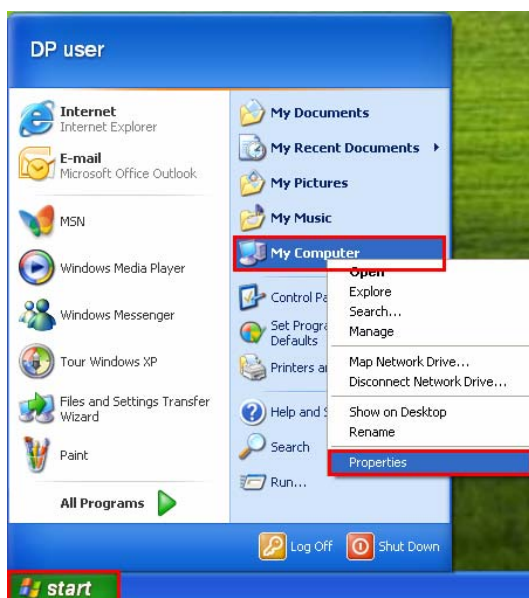


With that, change of IEEE1394 device driver is completed.

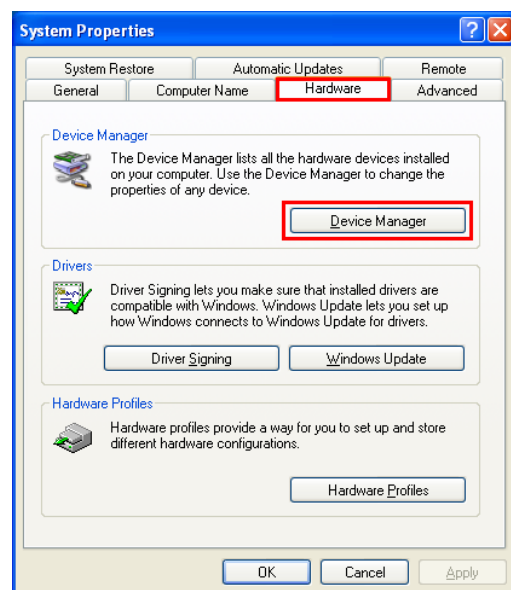
As the next step, please check the version number of the device driver changed.

## Confirmation of the version number

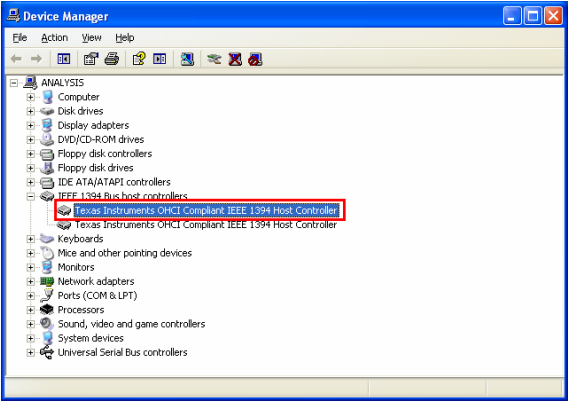
- (1) After completion of device driver change, check the version number of the device driver. Click [Start] – and right-click [My computer] and left-click [Properties].



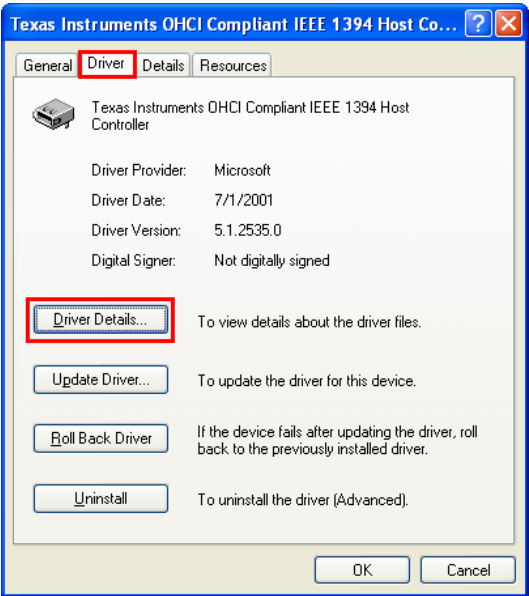
- (2) System properties will be indicated. Click [Device Manager] in [Hardware] tab.



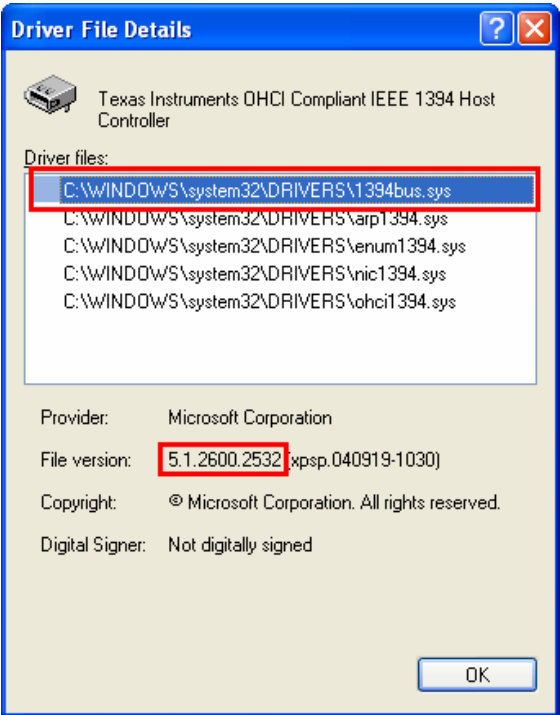
(3) Device Manager will appear. Double click “IEEE1394HostController” for DP25, which is indicated just below the 1394 Bus host controller.



(4) Click [Driver Details...] in [Driver] tab of the Device Manager.



(5) Select 5 driver files in series and confirm their file versions go as follow in the table below.



	After device driver change
1394bus.sys	5.1.2600.2532
arp1394.sys	5.1.2600.2180
enum1394.sys	5.1.2600.0
nic1394.sys	5.1.2600.2578
ohci1394.sys	5.1.2600.2549

With that, operation is completed.

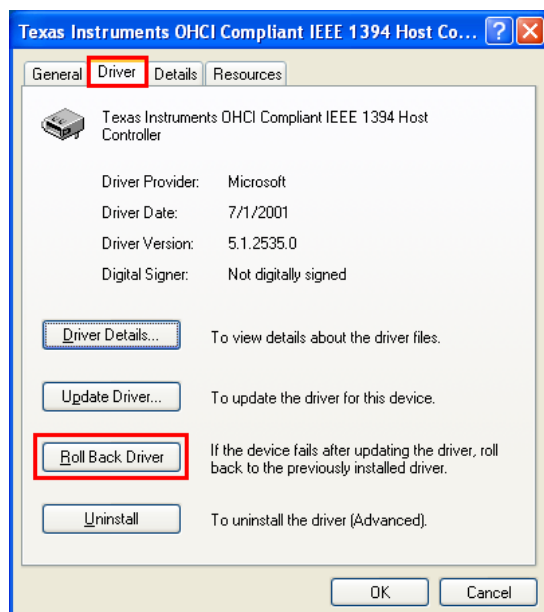
No need to reboot Windows.  
Connect an IEEE1394 cable for DP25 to the computer, and start up DP25 Controller software.

Changing IEEE1394 device driver by this operation may result in unexpected phenomena such as other IEEE1394 equipment do not function. In such a case, restore the device driver changed to the previous state according to the following procedure.

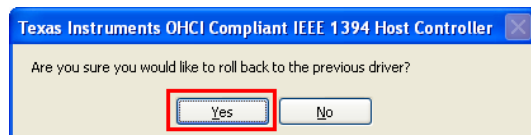
## Restoring the device driver changed to the previous state

- (1) Click [Driver Details...] in [Driver] tab of the Device Manager.

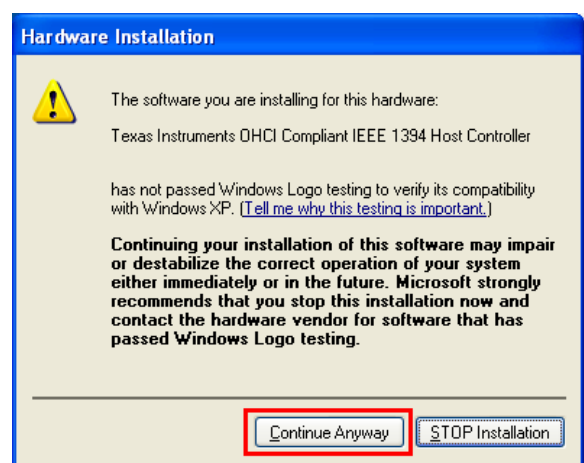
Click [Roll Back Driver] button.



- (2) Click [Yes] button.



- (3) The following dialog box will appear. Click [Continue Anyway].



With that, the device driver comes back to the state WindowsXP SP3 is installed.