

OmniPC 4.2

User's Guide

Intended Use

OmniPC is a software program for OmniScan products used in nondestructive inspections of industrial and commercial materials. Do not use OmniPC for any purpose other than its intended use.

Instruction Manual

Before use, thoroughly review the *OmniScan MXU Software User's Manual*. Use the product as instructed. Keep this guide and the user's manual in a safe, accessible location.

Introduction

The OmniPC software program is a complement to the OmniScan family. This program makes it possible to perform data file analysis on a computer. The OmniPC is similar to the OmniScan MXU software, except that it can only be used in analysis mode. The acquisition-related features are either disabled or available in read-only mode.

To Start the OmniPC Software

1. Click the OmniPC icon located on your desktop.
The Windows File Manager opens.
2. In the Data folder, select a data file, and then click **Open**.
The OmniPC software opens.

NOTE

- It is not possible to open two OmniPC windows at the same time.
- OmniPC cannot open more than one file at a time. If you try to open a second file, OmniPC prompts you to save any changes to the first file before closing the first file and opening the second.
- OmniPC loads itself based on the module used to create the selected data file. If the data file was created using a 32:128 module, OmniPC starts in 32:128 mode. If the data file was created using a 16:128 module, OmniPC starts in 16:128 mode. When you switch from one mode to another, OmniPC performs an automatic restart.

Shortcuts

The OmniPC software provides shortcuts for both the mouse and the keyboard.

Keyboard Shortcuts

Table 1 on page 2 contains the list of available keyboard shortcuts.

Table 1 Keyboard shortcuts

Shortcut	Function
CTRL+O	Opens the Windows File Manager.
CTRL+S	Performs a save according to the Save Key parameter setting (File > Data Settings > Save Key).
CTRL+P	Opens a print preview of the report.
F1	Opens the online help.
ALT+F4	Closes OmniPC.
ALT+TAB	Changes the currently open window (managed by Windows).
ALT+F9	Turns the multiple group display ON and OFF.
CTRL+TAB	Changes the current group in ascending order (1, 2, 3, etc.).
CTRL+SHIFT+TAB	Changes the current group in descending order (8, 7, 6, etc.).
ARROW KEYS	When in Edit mode: Increase or decrease the selected value.
PAGE UP or PAGE DOWN	<ul style="list-style-type: none">• When in Edit mode: Changes the numeric increment/decrement step (Δ) value.• When not in Edit mode: Turns the full-screen mode ON or OFF.
SHIFT+ARROW KEYS	Moves the Data cursor.
CTRL+ARROW KEYS	Moves the Reference cursor.
ALT+ARROW KEYS	Moves the Measurement cursor.

Mouse Shortcuts

The following actions and limitations apply to the mouse shortcuts:

- In some cases, gate or cursor selection zones overlap. If you attempt to drag a cursor or gate at the point where they overlap, they will move in this order of priority: Reference cursor, Measurement cursor, Data cursor, gate A, gate B, and gate I.
- The zoom starting point must be in a zone that does not contain any elements (gates or cursors).
- **To set a specific cursor as the current cursor**, click the selected cursor. The cursor pop-up button opens, allowing you to edit the cursor position. Rotate the mouse wheel up to increment the parameter value by the displayed increment step, or down to decrement the parameter value by the displayed decrement step.
- **To set a specific gate as the current gate**, click the selected gate. Click the left end of the gate to open the **Gate Start** parameter pop-up button in edit mode. Click the middle of the gate to open the **Gate Threshold** parameter pop-up button in edit mode. Click the right end of the gate to open the **Gate Width** parameter pop-up button in edit mode. When a gate is short, it might be impossible to click a specific zone. A visual reference indicates what sections of the gate are available (see Figure 1 on page 3).

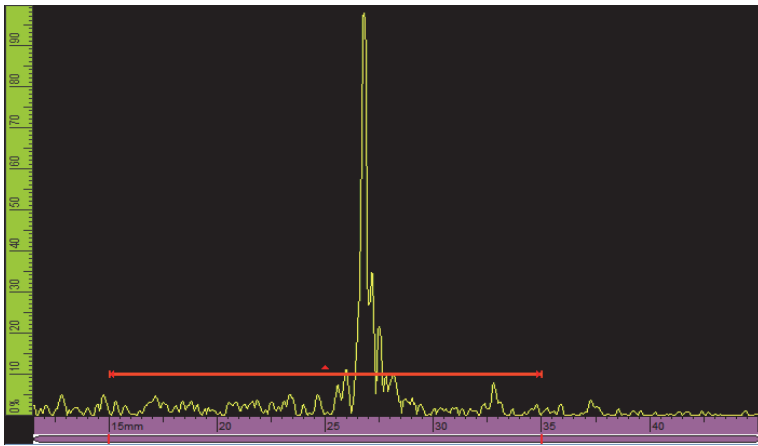


Figure 1 The visual reference on the gate

- **To zoom into a specific zone in a view**, drag with the left mouse button.
- **To pan within a zoomed view**, drag the scroll box of the axis you wish to pan.
- **To move the Data cursor (blue) to a specific location**, press and hold the SHIFT key, and then double-click the left mouse button on this specific location.
- **To move the Reference cursor (red) to a specific location**, press and hold the CTRL key, and then double-click the left mouse button on this specific location.
- **To move the Measurement cursor (green) to a specific location**, press and hold the ALT key, and then double-click the left mouse button on this specific location.
- **To change a numeric increment/decrement step (Δ) value**, click the parameter once to enable the Edit mode, right-click the numeric parameter and then, in the list, select the desired increment step (see Figure 2 on page 4). The increment list is also available for pop-up buttons (see Figure 3 on page 4).

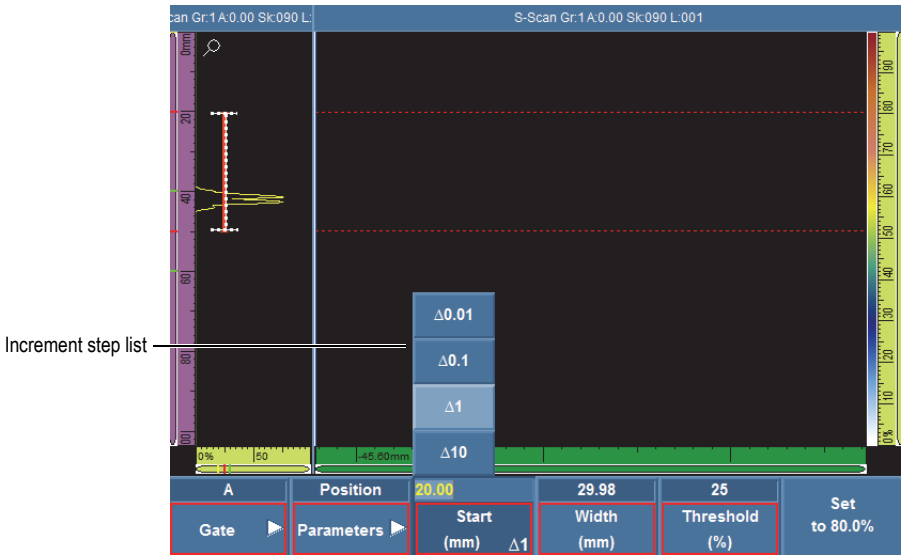


Figure 2 Parameter increment step list

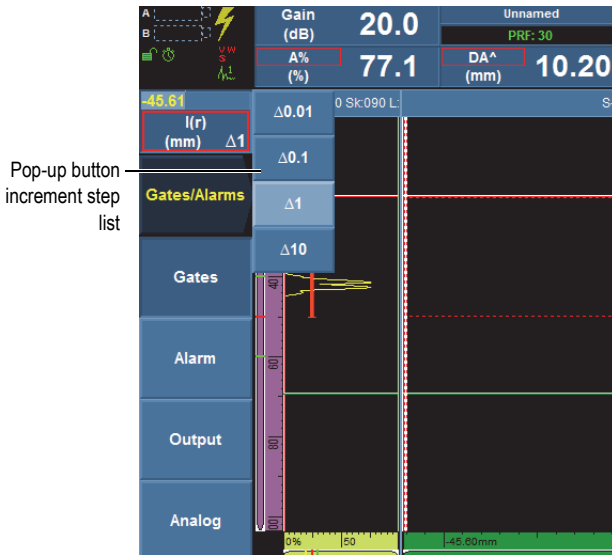


Figure 3 Pop-up button increment step list

- To toggle between menu-screen and full-screen mode, left-click on the layout section in the title bar, and then select **Full Screen** on the contextual menu. To go back to the menu-screen mode, select **Menu Screen**.

Print and Print-Preview Functions

The OmniPC report printing function, which is managed by Windows, enables you to select printers and printer settings the way you would with any other Windows-based program.

However, the print preview function (**File > Report > Category = Open/Save**, and then **Preview**) is managed by OmniPC, and does not rely on Windows.

IMPORTANT

Images provided in the print preview of a report may not be as accurate as those from a saved or printed report.

File Paths

Table 2 on page 5 contains a list of default paths for each file type.

Table 2 Default file paths

File type	Default path
Data files	Public\Documents\Olympus NDT\OmniPC\Data
Images	Public\Documents\Olympus NDT\OmniPC\Screen
Indication tables	Public\Documents\Olympus NDT\OmniPC\IndicationTable
Palettes	Public\Documents\Olympus NDT\OmniPC\Palette
Reports	Public\Documents\Olympus NDT\OmniPC\Report

OmniPC saves the last path used to open or save each file type (data, image, indication table, palette, and report).

When OmniPC cannot find the last path used (for example, the storage device is not available), the **Open** and **Save as** dialog boxes display the default path (see Table 2 on page 5).

OmniPC General Specifications

Language

The OmniPC interface language must be chosen by the user during installation. Only one language can be chosen per installation. The OmniPC language is independent from the Windows language.

Operating System Compatibility

OmniPC is supported by Windows 7 and Windows 8.

Screen Resolution

- Maximum resolution: 1920 × 1080
- Minimum resolution: 1280 × 1024

Olympus Scientific Solutions Americas, 48 Woerd Avenue, Waltham,
MA 02453, USA

www.olympus-ims.com

Printed in Canada • Copyright © 2015 by Olympus. All rights reserved.



Part ID: Q1000019



DMTA-20074-01EN
Rev. A, June 2015



Printed on Rolland Hitech50,
which contains 50 % post-
consumer fiber.