



MXU 4.3 Release Notes

MXU 4.3R5

2016-09-27

Resolved issues from previous versions

- Probe detection difficulties with the use of law files were fixed.

MXU 4.3R4

2016-08-03

New features

- The Velocity parameter is available from the Setup Configuration Window.
- Information about OmniScan and Acquisition Module's electronics is now available from the OmniScan System Info window.

Resolved issues from previous versions

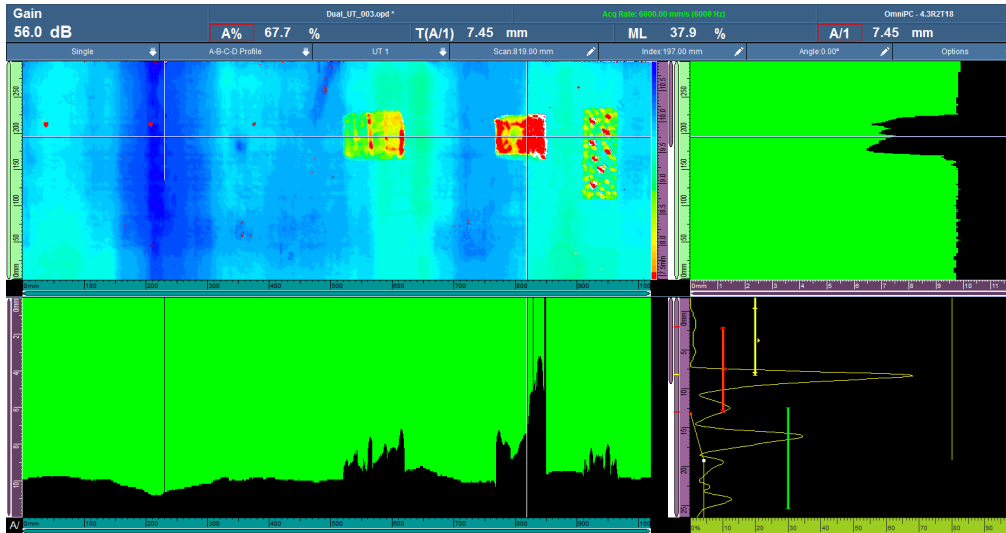
- Various probe detection issues were fixed.
 - o Additionally, when a probe detection results in a focal law generation, a warning message offers you the option to continue with the modification or to turn OFF the auto detect and to use the original probe.

MXU 4.3R2

2016-03-18

New features

- Profile B-scan view
 - o Available only in conventional UT 0° mode (Setup wizard)
 - o A-B Profile layout available in acquisition and analysis modes
 - o A-B-C-D Profile layout available in analysis mode only



- Limited to OmniPC – Export B-scan function
 - Available via the B-scan quick access menu
 - Exports data from the current index position (“Export”) or exports data from all index positions (“Export All”)
 - Text file (.txt) content organization is the same as TomoView

Resolved issues from previous versions

- When a parameter is selected for editing, tapping and holding it displays the list of possible increments.
- Calibrations based on the A-scan signal (velocity, for example) are done according to the current A-scan.
 - The envelope is displayed only for visual reference.

MXU 4.3R1

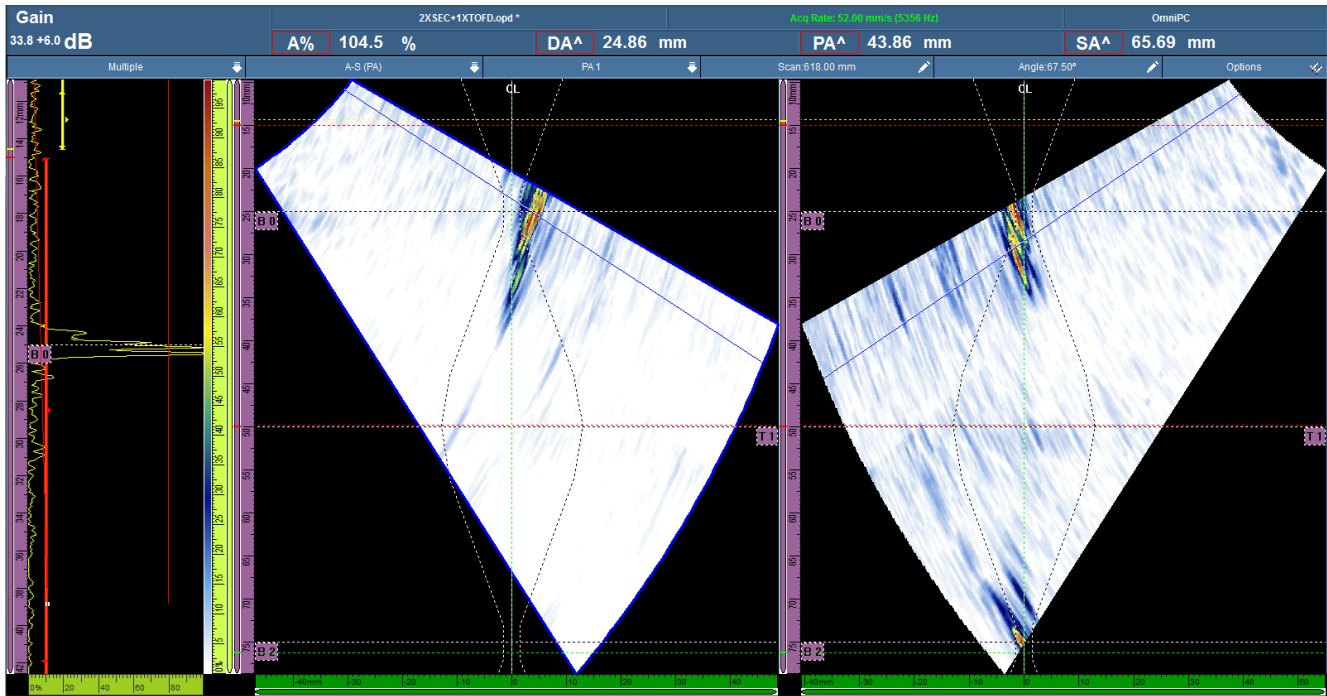
2016-01-15

New features

- The Group/Probe & Part menu has been reinstated.
- The Focal Law menu has been reinstated.
- A new setup configuration screen has been developed. It provides the following advantages:
 - The screen is accessible at all times (whether in full-screen or menu screen mode) by tapping and holding the Angle/VPA section of the title bar.
 - The main parameters are grouped in a single location for easy on-the-go modifications.
 - You can skip from one group to the next, without leaving the screen.
 - The screen is available in acquisition and analysis modes:
 - To make live adjustments during acquisition.
 - To review the focal law parameters and to adjust the probe position parameters (Scan offset, Index offset, and Skew) during analysis.

- A new scan configuration screen has been developed. It provides you the following advantages:
 - The screen is accessible at all times (in both full-screen and menu screen modes) by tapping and holding the Scan or Index section of the title bar.
 - Like the setup configuration screen, all scanner related parameters are accessible in the scan configuration screen.
- A software Clicker button is available.
 - When an encoder is defined as “Clicker” or “Clicker + Preset”, the “Step” button becomes available in the Scan or Index section of the title bar.
 - “Scan Step” for the Scan axis when the associated encoder is defined as a Clicker-type.
 - “Index Step” for the Index axis when the associated encoder is defined as a Clicker-type.

- A new multiple layout is available: A-S (PA). It combines the A-scan of the current group with all group S-scans.



Resolved issues from previous versions

- When focal law generation is required and calibration settings are about to be deleted, a warning message offers you the option to continue with the modification or to cancel it and return to the original configuration.
- When a new configuration is created (File > Setup > New), the OmniScan stays in menu screen mode.