

OmniPC 4.3 Release Notes

OmniPC 4.3R5

2016-09-27

New features

- The impacts of this release are dedicated to the MXU software.

OmniPC 4.3R4

2016-08-03

New features

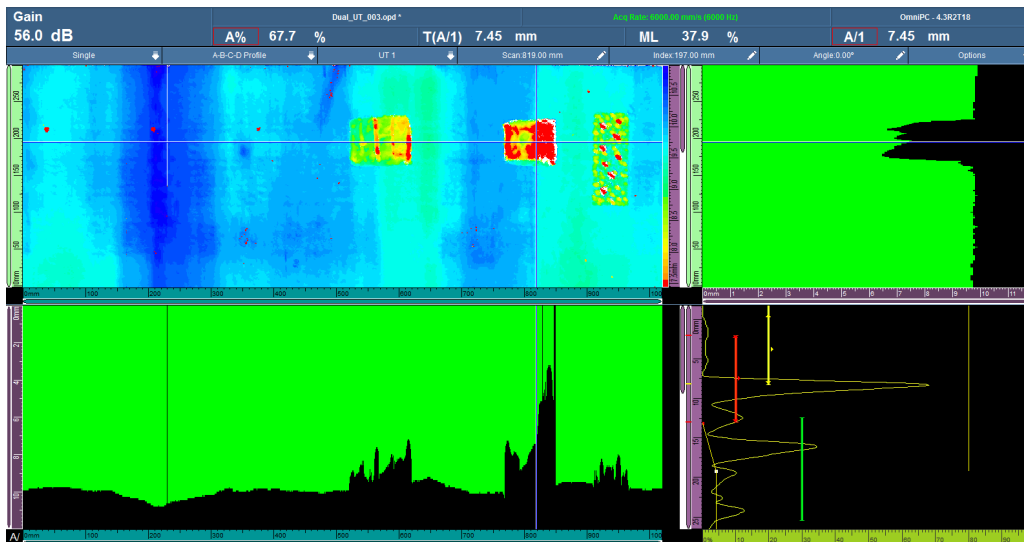
- The Velocity parameter is available from the Setup Configuration Window.
- Information about OmniScan and Acquisition Module's electronics is now available from the OmniScan System Info window.

OmniPC 4.3R2

2016-03-18

New features

- Profile B-scan view
 - o Available only in conventional UT 0° mode (Setup wizard prior to acquisition)
 - o A-B Profile layout available in acquisition and analysis modes
 - o A-B-C-D Profile layout available in analysis mode only



- Limited to OmniPC – Export B-scan function
 - o Available via the B-scan quick access menu
 - o Exports data from the current index position (“Export”) or exports data from all index positions (“Export All”)
 - o Text (.txt) file content organization is the same as TomoView.

Resolved issues from previous versions

- When a parameter is selected for editing, tapping and holding it displays the list of possible increments.

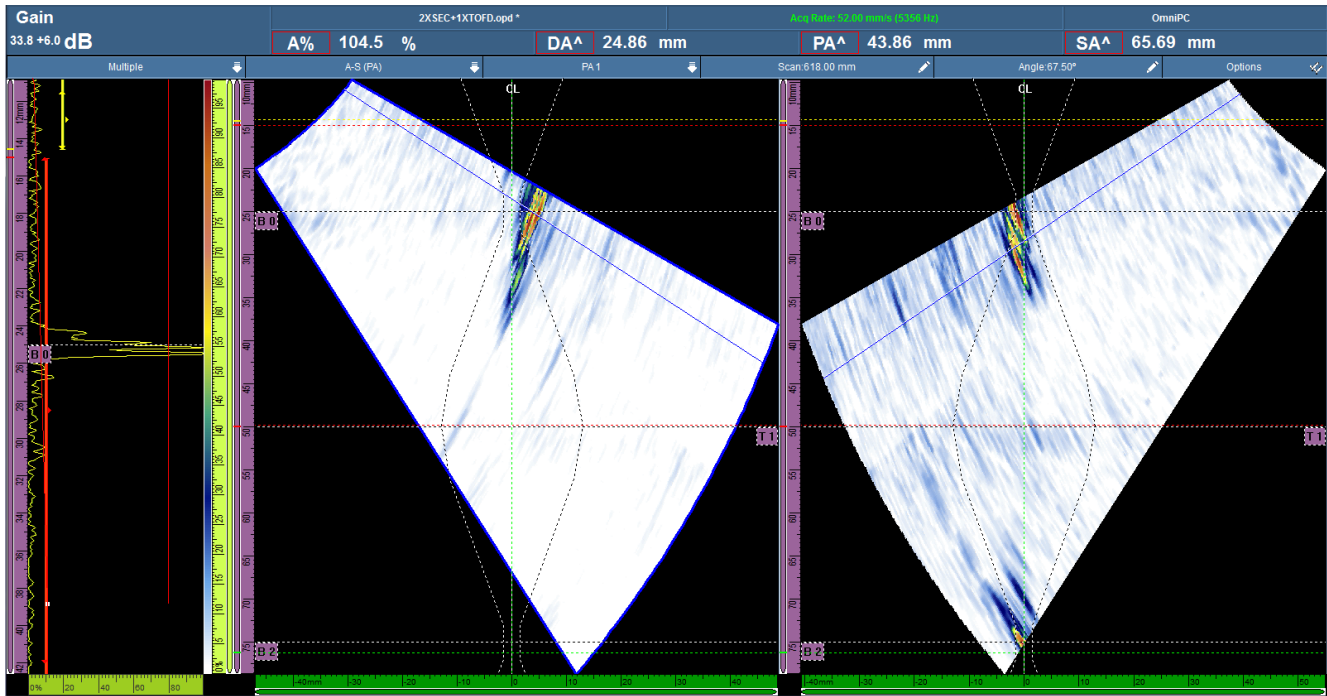
OmniPC 4.3R1

2016-01-15

New features

- The Group/Probe & Part menu has been reinstated.
- The Focal Law menu has been reinstated.
- A new setup configuration screen was developed. It provides the following advantages:
 - o The screen is accessible at all times (whether in full-screen or menu screen mode) by clicking and holding the Angle/VPA section of the title bar.
 - o The main parameters are grouped in a single location for easy on-the-go modifications.
 - o You can skip from one group to the next, without leaving the screen.
 - o The screen is available in acquisition and analysis modes:
 - To make live adjustments during acquisition
 - To review focal law parameters and to adjust probe position parameters (Scan offset, Index offset, and Skew) during analysis
- A new scan configuration screen has been developed. It provides you the following advantages:
 - o The screen is accessible at all times (in both full-screen and menu screen modes) by clicking and holding the Scan or Index section of the title bar.
 - o Like the setup configuration screen, all scanner related parameters are accessible in the scan configuration screen.

- A new multiple layout is available: A-S (PA). It combines the A-scan of the current group with all group S-scans.



Resolved issues from the previous version

- The multiple group layouts are now available in menu screen mode (limited to OmniPC).