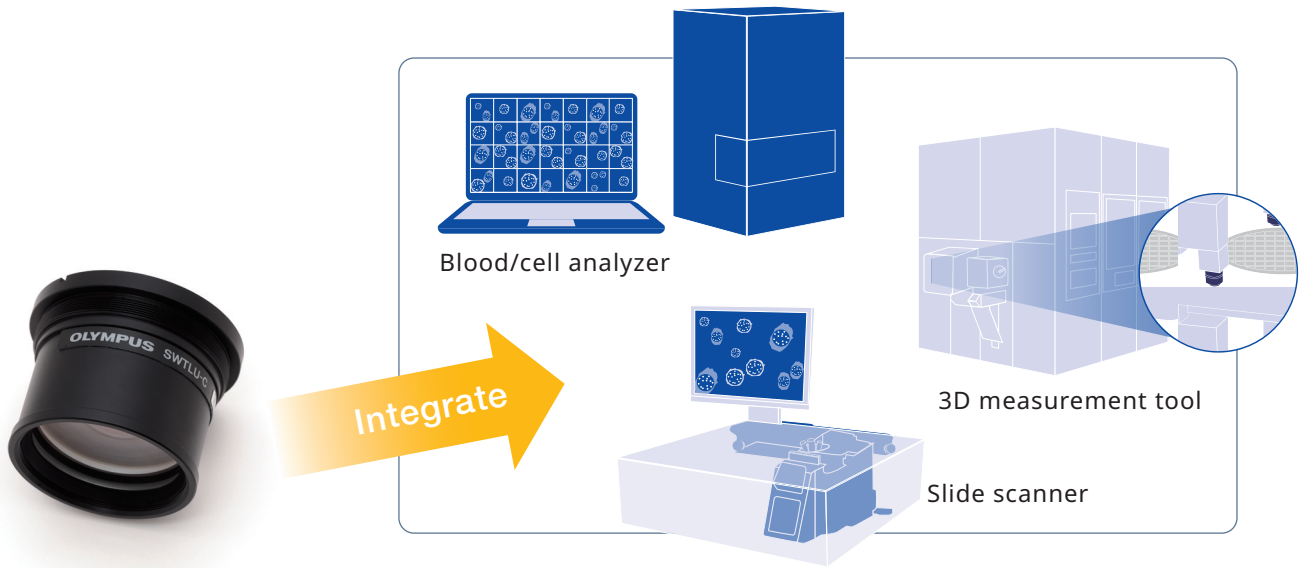


Smart Solution for Your Optical Design



A Compact Tube Lens with a Super Wide Field of View



As the chip size of microscope cameras increases, so does the demand for optics that provide a super wide field of view. Olympus' SWTLU-C compact, super-wide tube lens and super-wide UIS2 objectives meet that demand with homogenous, flat images with negligible aberration across a field of view up to 26.5 mm. Compact and lightweight, the SWTLU-C tube lens is easy to integrate into your optical system.



Combine the tube lens with UIS2 objectives

LMPLFLN50x

Specifications

N.A.	W.D.	F.N.
0.50	10.6	26.5

Transmittance/Wavelength

Specification Information available on the Olympus website

Higher-Quality, Super-Wide Images

Excellent aberration correction

When used with UIS2 objectives, the SWTLU-C tube lens provides advanced image quality with less spherical and chromatic aberration.

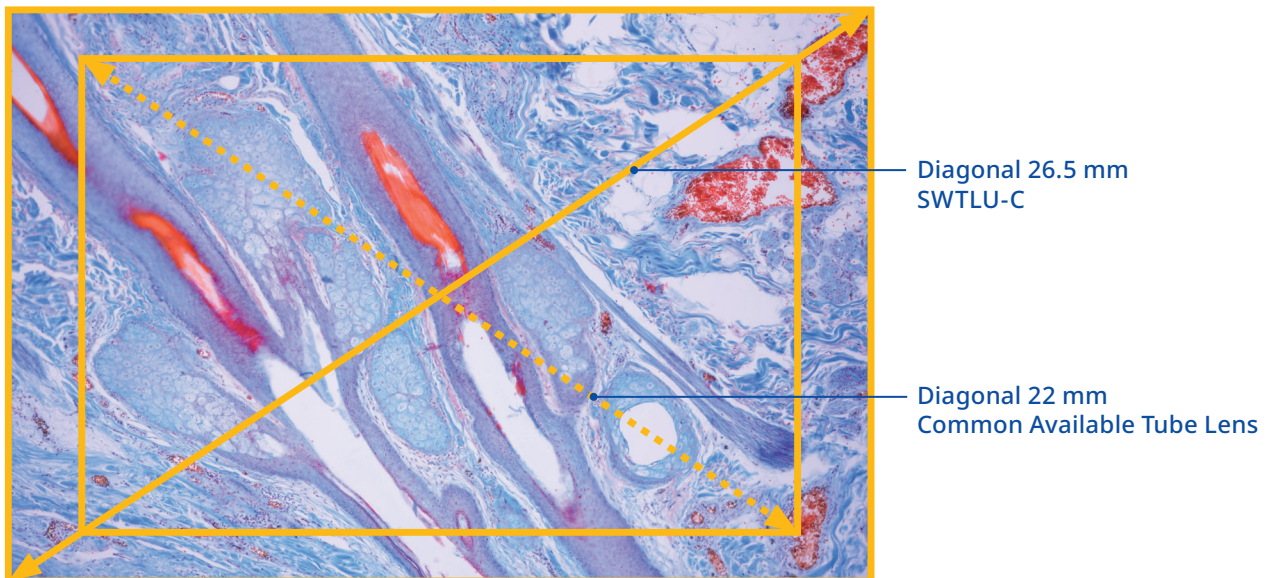
Super-wide 26.5 mm field of view

The tube lens enables more data to be collected in each image while providing flat, uniform image quality in a 26.5 mm field of view.

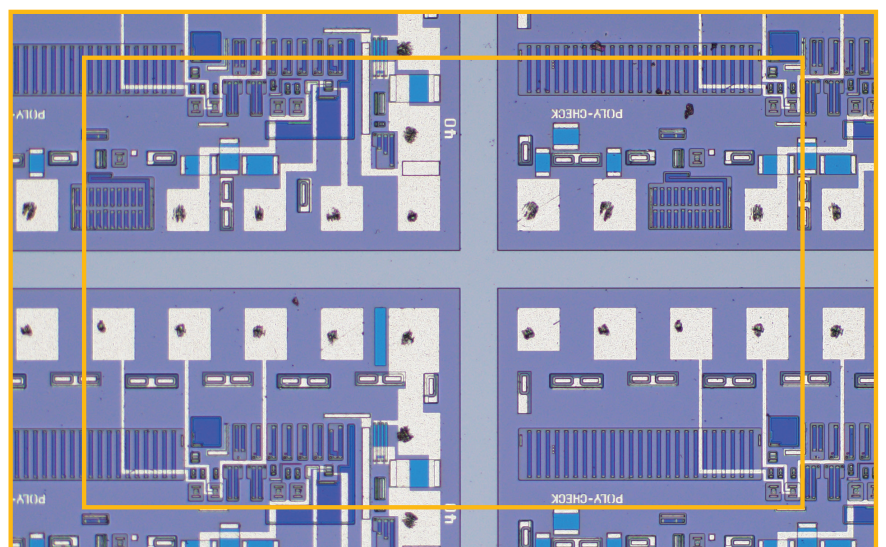
Customize your optics with Olympus components

Insert other optical components between the UIS2 objectives and the tube lens while maintaining undistorted images.

A common tube lens (22 mm) compared to the SWTLU-C (26.5 mm)



Application image for Life Science



Application image for Industrial

Easy to Implement

Universal attachment

Mount the tube lens unit (SWTLU-C) using a standard M41 x 0.5 thread.

f180 tube lens

With 180 mm focal length, the tube lens unit is designed to pair with UIS2 objectives.

Compact

The SWTLU-C is much smaller than other tube lenses, enabling flexible instrumentation integration.



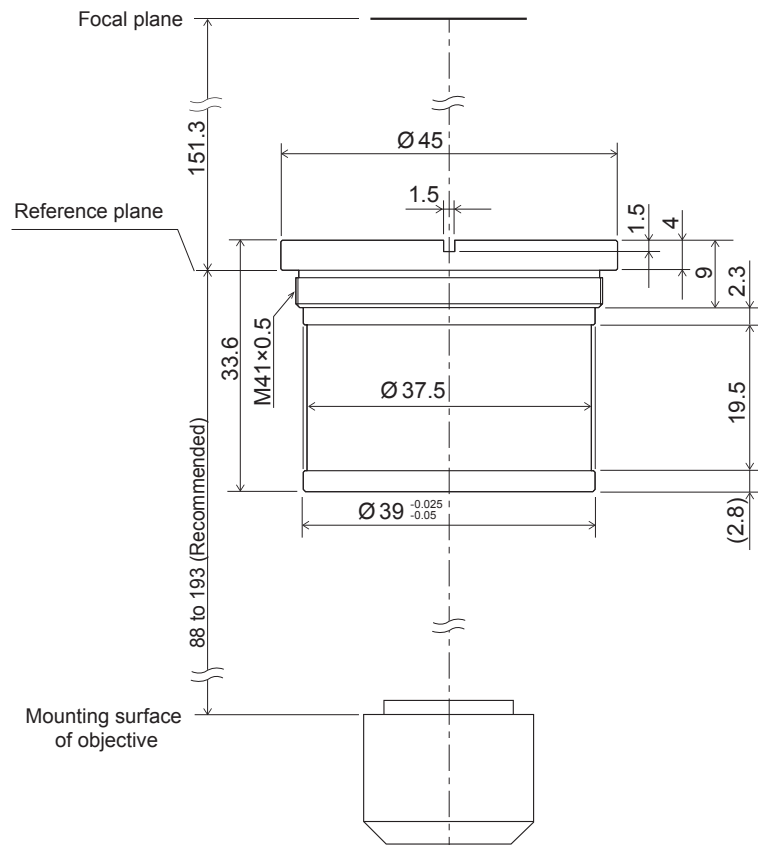
Specifications

Product Name	SWTLU-C
Dimension	φ 45 × 33.6 mm
Weight	94 g
Projection Area	26.5 mm ^{*1)}
Focal length f	180 mm
Magnification	1X ^{*2)}
Focal Plane Position	151.3 mm from the reference plane
Mounting Thread	M41 x 0.5 mm
Mounting Method	Screw In

*1) In combinations with FN26.5 Objectives

*2) In combination with UIS2 Objectives (designed for f180 mm tube lens)

Main Dimensions [mm]



• EVIDENT CORPORATION is ISO14001 certified.

For details on certification registration, visit <https://www.olympus-ims.com/en/iso/>

• EVIDENT CORPORATION is ISO9001 certified.

• All company and product names are registered trademarks and/or trademarks of their respective owners.

• Images on the PC monitors are simulated.

• Specifications and appearances are subject to change without any notice or obligation on the part of the manufacturer.

EvidentScientific.com

EVIDENT

EVIDENT CORPORATION

Shinjuku Monolith, 2-3-1 Nishi-Shinjuku, Shinjuku-ku, Tokyo 163-0910, Japan

OLYMPUS

N8600814-052024