

Visual Inspection Kits for Wind Turbine Maintenance



Proactive, regular wind turbine maintenance is essential to consistently produce stable and reliable wind power energy. For dependable, high quality remote visual inspection (RVI) of wind turbine gearboxes, Olympus offers IPLEX™ videoscope kits as turnkey solutions.





Rugged and Portable

IPEX G Lite and IPEX GT videoscopes are compact and battery powered. This and their light weight—the IPEX G Lite videoscope weighs only 1.15 kg (2.5 lb) and the IPEX GT videoscope weighs 2.8 kg (6.2 lb)—makes them easy to carry. The portability of these videoscopes helps you work more efficiently in the tight spaces inside a wind turbine nacelle.

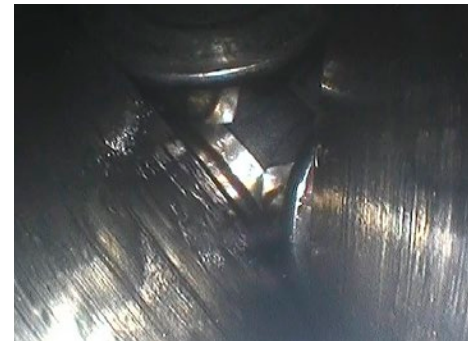
Both the IPEX G Lite and IPEX GT videoscopes are dust and drip proof and built to withstand 1.2 m (4 ft) drops and vibration.

Easy to Navigate in Tight Oily Spaces

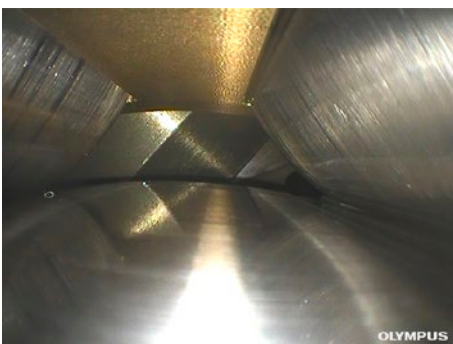
Gear oil is everywhere in the gearbox, and it makes the image blurry when it gets on the videoscope lens. Inspectors can waste half of their gearbox inspections cleaning and repositioning the scope lens. Olympus developed an optical adaptor that draws excess gear oil away from the lens using capillary action.



Without oil clearing adaptor



With oil clearing adaptor



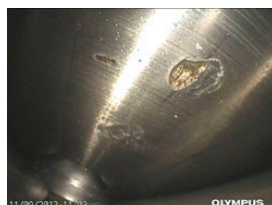
True to Your Image

IPEX G Lite and IPEX GT videoscopes offer high-resolution images and intelligent illumination, so you achieve consistently clear and bright images with reduced glare. Our WiDER™ and PulsarPic™ image processing also enhance the dark areas that are difficult to see due to the excessive brightness of reflective surfaces inside the gearbox. This image optimization enables you to check gears for cracking and chipping and inspect the bearings for scratches, pitting, indentations, and any other imperfections.

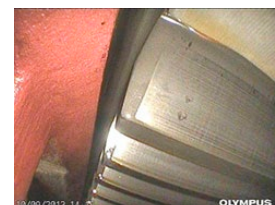
*The IPEX GT videoscope needs to be upgraded to use WiDER image processing.



High-speed stage bearing



Planetary gear with damage



Gear teeth

Recommended Kits

Handheld Kit



IPLEX G Lite Videoscope

IPLEX G Lite videoscope Φ6 mm (0.23 in.), 2 m (6.56 ft)	IPLEX G Lite videoscope Φ4 mm (0.16 in.) , 2 m (6.56 ft)
AT120D/NF-IV96G 6 mm viewing tip adaptor	AT120D/NF-IV94G 4 mm viewing tip adaptor
AT120D/FF-IV96G 6 mm viewing tip adaptor	AT120D/FF-IV94G 4 mm viewing tip adaptor
AT80D/FF IV96G 6 mm viewing tip adaptor	AT80D/FF IV94G 4 mm viewing tip adaptor
MAJ-1253 Rigid sleeve	MAJ 1737 Rigid sleeve
Flex and stay tube, 10 mm OD (0.4 in. OD)*	

*Third-party product.

Large 8-inch Monitor Kit



IPLEX GT Videoscope

IPLEX GT videoscope Φ6 mm (0.23 in.), 2 m (6.56 ft)	IPLEX GT videoscope Φ4 mm (0.16 in.), 2 m (6.56 ft)
AT120D/NF-IV96G 6 mm viewing tip adaptor	AT120D/NF-IV94G 4 mm viewing tip adaptor
AT120D/FF-IV96G 6 mm viewing tip adaptor	AT120D/FF-IV94G 4 mm viewing tip adaptor
AT80D/FF-IV96G 6 mm viewing tip adaptor	AT80D/FF-IV94G 4 mm viewing tip adaptor
MAJ-1253 Rigid sleeve	MAJ 1737 Rigid sleeve
MAJ-2366 Upgrade Kit GT to GX	
Flex and stay tube, 10 mm OD (0.4 in. OD)*	

*Third-party product.

Accessories



Flex and Stay Tube

Pliable, yet rigid guide tube, which can be shaped freely. This flex and stay tube helps you to navigate the insertion tube to your target by enabling you to bend it to a desired shape.

Outer diameter is 10 mm (0.39 in.)



Rigid Sleeve

MAJ1737 (Rigid sleeve for 4 mm (0.16 in.) insertion tube)
MAJ 1253 (Rigid sleeve for 6 mm (0.24 in.) insertion tube)

Each set comes with three rigid sleeves, measuring 250 mm (9.84 in.), 340 mm (13.38 in.), and 450 mm (17.71 in.) in length. The rigid sleeve can be fixed on the flexible insertion tube to straighten it for insertion into the gearbox.

Note: These kits contain our recommended items, but it is possible to adapt the selection to meet your needs.

OLYMPUS CORPORATION is ISO9001 and ISO14001 certified.

All specifications are subject to change without notice.

This product is designed for use in industrial environments for the EMC performance. Using it in a residential environment may affect other equipment in the environment.

Olympus, the Olympus logo, WIDER, PulsarPic, and IPLEX are trademarks of Olympus Corporation or its subsidiaries. All company and product names are registered trademarks and/or trademarks of their respective owners.

www.olympus-ims.com

OLYMPUS[®]

OLYMPUS CORPORATION

N8602275-082021