

**Special offer**  
Ultrasonic Package



## Ultrasonic Package for Bond and Delamination Testing

The Ultrasonic Package for Bond and Delamination Testing enables the detection of adhesive disbonds of glass windshields and of defects in glass fiber-reinforced material. All indications are displayed in a color scheme, where a defect is illustrated as a red area. Good bonding and regularity are illustrated as blue to green areas. The thickness measurement of gelcoat fire retardant coating can be performed with a small delay line transducer.

### Typical applications include:

- Bond testing on glass windshields (front or side)
- Delamination testing for GFRP
- Metal-to-metal bond testing
- Gelcoat wall thickness (fire protection)



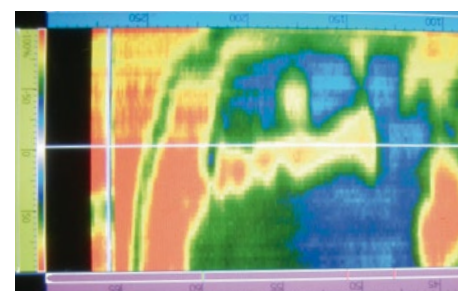
OmniScan X3 phased array flaw detector

### Service includes:

- We offer recalibration for all devices in our calibration laboratory (certified for DIN EN 17025), and at your site.

### Test result of the bonded glass

**windshield** with defect bonding and without blackening of the surface. Red areas in the figure (right) illustrate the disbond. Blue and green areas illustrate correct bonding.



# The package includes:

## Beschreibung

OmniScan X3 16: 64PR phased array flaw detector with FMC/TFM and 1 UT channel. MXU PA software functions include a maximum of one TOFD and 2 PA groups simultaneously.

The package contents include the latest OmniScan MXU software version, a rugged transport case, a calibration certificate, a 93 Wh Li-ion battery, antiglare screen protection, a power supply unit (AC to DC), a USB stick with OmniScan software and User Manuals, OmniPC analysis software, and a 16 GB USB stick.

RollerFORM phased array wheel probe with encoder and indexer for ergonomic C-scan inspection on flat and convex surfaces with a radius up to 50 mm at immersion technology quality.

Equipped with a indexer button for index switching, a start acquisition button for data acquisition, a laser guide, a water filling system for the wheel with optimized acoustic impedance, a height-adjustable middle wheel for inspection of narrow or curved parts, and a spray bottle to apply coupling liquid.

Frequency	Elements	Aperture	Pitch	Elevation	Delay Line	Probe Housing	Cable Length	Connector
3.5 MHz linear array	64	51.2 × 6.4 mm (active)	0.80 mm	6.4 mm	25 mm	WP1	2.5 m	OmniScan

M208-RM ultrasonic transducer with delay line, 20 MHz, 3.2 mm transducer diameter

V1091 contact ultrasonic transducer, 5 MHz, transducer diameter 3.2 mm

Connection cable LEMO 0 to Microdot for M208 and V1091 transducers to the OmniScan unit

EU power cable

**Free one-day training included in this package**

**Package price 39,950 €\***

<https://www.olympus-ims.com>

\* Offer excludes statutory VAT – Offer is valid until 31 October, 2020. Specifications, design, and accessories are subject to change without notice by the manufacturer.

**OLYMPUS**

**OLYMPUS AUSTRIA GES.M.B.H.**  
Shuttleworthstrasse 25  
1210 Vienna, Austria  
Phone: +43 1 291010  
E-Mail: mikroskopie@olympus.at

**OLYMPUS DEUTSCHLAND GMBH**  
Amsinckstrasse 63  
20097 Hamburg, Germany  
Phone: +49 800 20044243  
E-Mail: insidesales@olympus.de