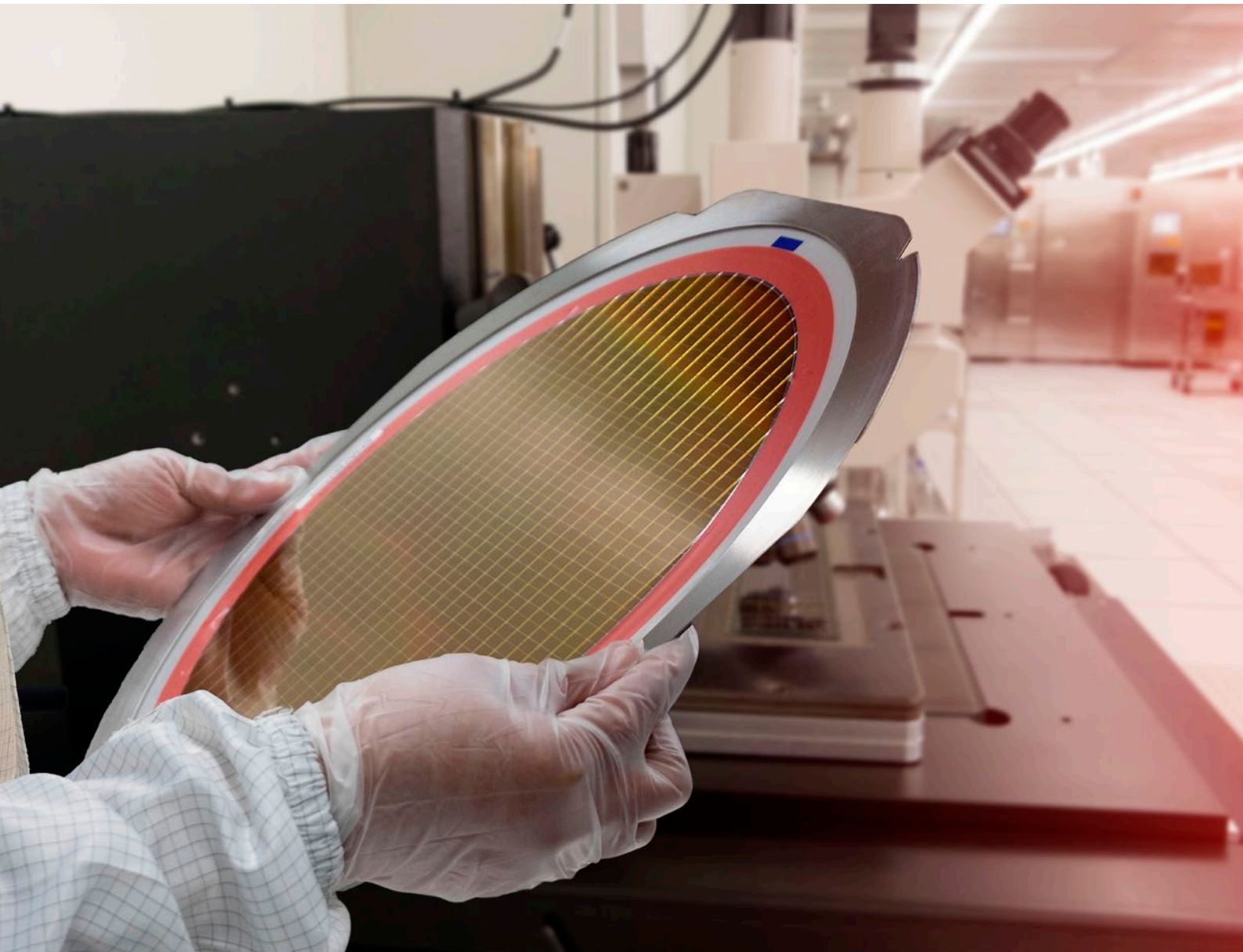


Visual Inspection Kits for Semiconductor Facility Maintenance



Semiconductors are essential supporting components for a wide range of manufacturing industries. To avoid production delays, efficiency is critical when conducting maintenance of extensive pipe networks and ductwork in semiconductor manufacturing facilities.

For high-quality remote visual inspection (RVI) in semiconductor manufacturing plants, Olympus' IPLEX™ videoscope kits deliver thorough yet efficient inspections to minimize production downtime.





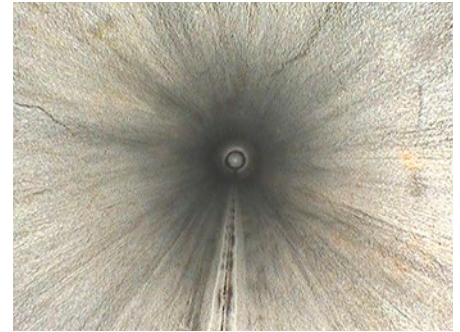
Bright, Clear Images

IPLEX™ videoscopes deliver high-quality color images, revealing trace residue left by chemical fluids and tiny spots of corrosion in processing and drain pipes.

The PulsarPic™ image processor actively suppresses halation caused by light reflected off the shiny inner surfaces of pipes, such as those with glass linings. WIDER™ image processing technology supports a wide dynamic range to maintain bright, even illumination inside large ducts in clean rooms.

Optimize Your View with Optical Adaptors

Interchangeable optical adaptors provide the optimal view of your inspection targets. The near-focus lens can expose critical defect details even in tight spaces, such as inside small pipes commonly found in semiconductor manufacturing facilities.



Smooth Inspection for Small Pipes

The main pipework in semiconductor manufacturing facilities is small in diameter and has many elbows and branches. Using the IPLEX videoscope kit's 4 mm diameter scope, insertion is smooth in small-diameter pipes. The precision control of TrueFeel™ scope tip articulation enables you to easily maneuver the insertion tube through intricate piping networks.

For inspection of ceiling ductwork, the kit's semiflexible guide tube assists the tube insertion by optimizing its rigidity.

Scopes for Multiple Jobs

Our RVI kits include a range of scope lengths from 2 m–30 m (6.6 ft–98.4 ft) to support inspection of various pipe and tube sizes. The interchangeable scope design of IPLEX GX and IPLEX GAir videoscopes enables you to quickly switch to a longer or shorter scope to suit your inspection needs.



Recommended Kits

Handheld Kit



IPLEX G Lite Videoscope

IPLEX G Lite videoscope $\Phi 6$ mm (0.23 in.), 2 m (6.56 ft), 3.5 m (11.5 ft), 10 m (32.8 ft)	IPLEX G Lite videoscope $\Phi 4$ mm (0.16 in.), 2 m (6.56 ft), 3.5 m (11.5 ft)
AT120D/NF-IV96G 6 mm viewing tip adaptor	AT120D/NF-IV94G 4 mm viewing tip adaptor
AT120D/FF-IV96G 6 mm viewing tip adaptor	AT120D/FF-IV94G 4 mm viewing tip adaptor
AT120S/NF-IV96G 6 mm viewing tip adaptor	AT100S/NF-IV94G 4 mm viewing tip adaptor
AT120S/FF-IV96G 6 mm viewing tip adaptor	AT100S/FF-IV96G 4 mm viewing tip adaptor
AT220D-IV76 8.4 mm viewing tip adaptor	-
Flex and stay tube, 10 mm OD (0.4 in. OD)*	
Centering device for 6 mm diameter scope*	Centering device for 4 mm diameter scope*
MAJ-2342 guide tube for 6 mm diameter 10 m scope	-

*Third-party product.

Large 8-Inch Monitor Kit



IPLEX GX Videoscope

IPLEX GX videoscope, $\phi 6$ mm (0.23 in.) 2 m (6.56 ft), 3.5 m (11.5 ft), 7.5 m (24.6 ft), 10 m (32.8 ft)	IPLEX GX videoscope $\phi 4$ mm (0.16 in.) 2 m (6.56 ft), 3.5 m (11.5 ft)
AT120D/NF-IV96G 6 mm viewing tip adaptor	AT120D/NF-IV94G 4 mm viewing tip adaptor
AT120D/FF-IV96G 6 mm viewing tip adaptor	AT120D/FF-IV94G 4 mm viewing tip adaptor
AT120S/NF-IV96G 6 mm viewing tip adaptor	AT100S/NF-IV94G 4 mm viewing tip adaptor
AT120S/FF-IV96G 6 mm viewing tip adaptor	AT100S/FF-IV94G 4 mm viewing tip adaptor
AT220D-IV76 8.4 mm viewing tip adaptor	-
Flex and stay tube, 10 mm OD (0.4 in. OD)*	
Centering device for 6 mm diameter scope*	Centering device for 4mm diameter scope*
MAJ-2341 guide tube for 6 mm diameter 7.5 m scope	-
MAJ-2342 guide tube for 6 mm diameter 10 m scope	-

*Third-party product.

Extra-Long Kit



IPLEX GAir Videoscope

IPLEX GAir videoscope $\phi 8.5$ mm (0.33 in.) Scope lengths: 20 m (65.6 ft.), 30 m (98.4 ft.)
AT120D/NF-IV98GA 8.5 mm viewing tip adaptor
AT120D/FF-IV98GA 8.5 mm viewing tip adaptor
AT120S/NF-IV98GA 8.5 mm viewing tip adaptor
AT120S/FF-IV98GA 8.5 mm viewing tip adaptor
AT220D-IV98GA 10 mm viewing tip adaptor
Centering device MAJ-1935
Guide head MAJ-2484
Push rod adaptor MAJ-2486
Push rod*

*Third-party product.

Note: the kit comes with recommended items, but you can also select items to customize your kit.

Accessories



Flex and Stay Tube

Pliable yet rigid tube that can be shaped freely. Easily bend the tube in any shape to reach an object for remote visual inspection.

Outer diameter is 10 mm (0.39 in.).



Centering Device

Holds the insertion tube centered inside a pipe or tube. Available for scopes with a diameter of 4 mm (0.16 in.), 6 mm (0.23 in.), and 8.5 mm (0.33 in.).



Flexible Guide Tube

Increasing the insertion tube's rigidity, the flexible guide tube assists you in inserting the scope to reach deeper areas. Available for 7.5 m (24.6 ft) and 10 m (32.8 ft) scopes.



Guide Head

Attach the guide head on the scope tip to ease its passage over the joints of a pipe, reducing the friction against the pipe's inner surface. Available for 20 m (65.6 ft) and 30 m (98.4 ft) scopes.



Push Rod Adaptor

Mounts the push rod onto the scope. The combination of the push rod and the dedicated adaptor enables the scope to pass over elbow joints to reach deep into a pipe. Available for 20 m (65.6 ft) and 30 m (98.4 ft) scopes.

OLYMPUS CORPORATION is ISO9001 and ISO14001 certified.

All specifications are subject to change without notice.
This product is designed to be used in industrial environments for the electromagnetic compatibility (EMC) performance. Using it in a residential environment may affect other equipment in the environment.
Olympus, the Olympus logo, IPLEX, WIDER, PulsarPic, and Spot-Ranging are trademarks of Olympus Corporation or its subsidiaries. All company and product names are registered trademarks and/or trademarks of their respective owners.

www.olympus-ims.com

OLYMPUS® OLYMPUS CORPORATION