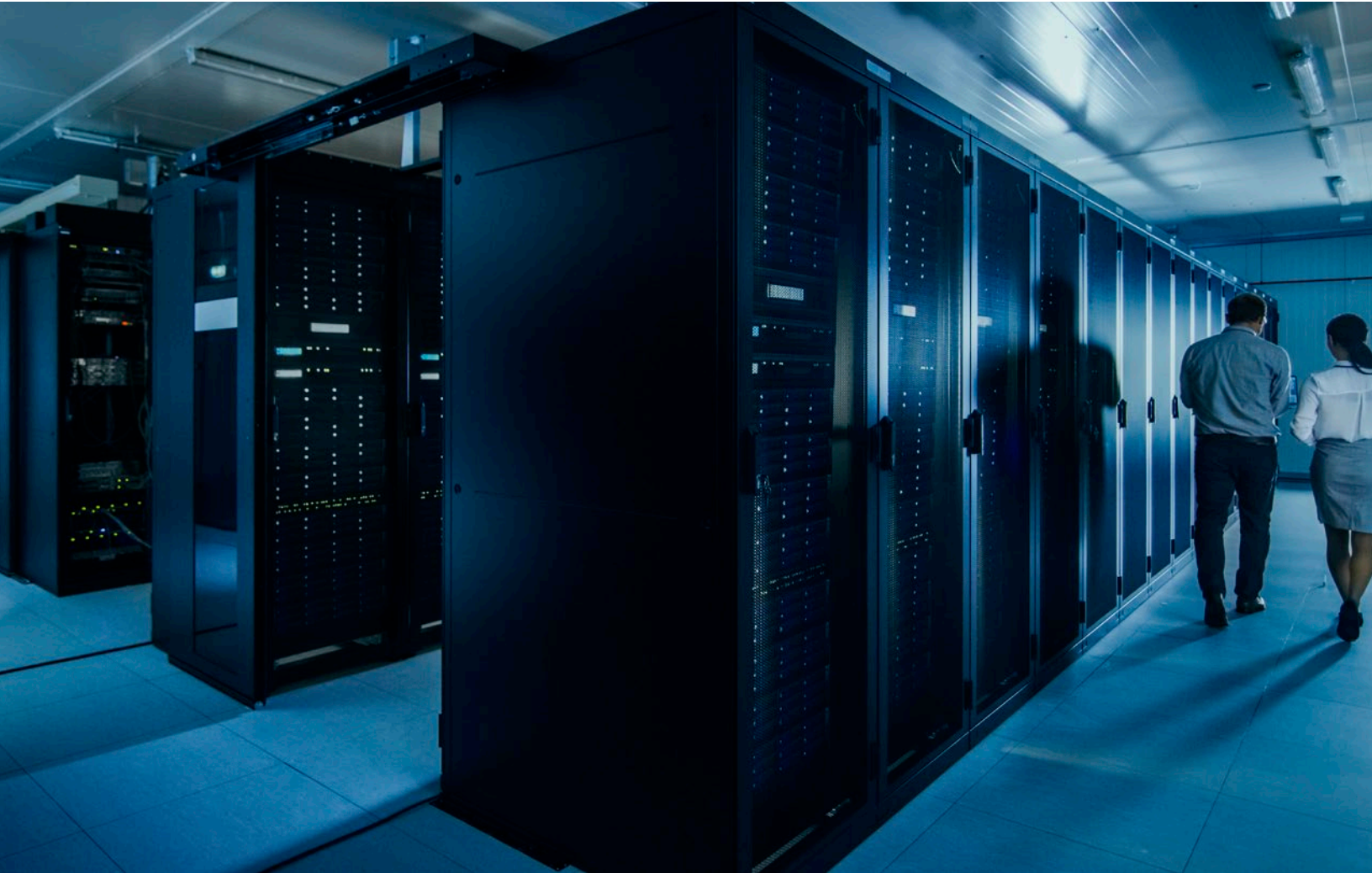




Visual Inspection Kits for Data Center Maintenance



Data centers house business-critical applications and data, so the servers inside generate enormous amounts of heat. As part of routine data center maintenance, the heating, ventilation, and air conditioning (HVAC) system must be strictly controlled to eliminate the risk of damage caused by dust and higher temperatures and humidity.

Our visual inspection kits feature IPLEX™ videoscopes and other recommended tools for high-quality inspections of data center HVAC systems.





Bright, Clear Images

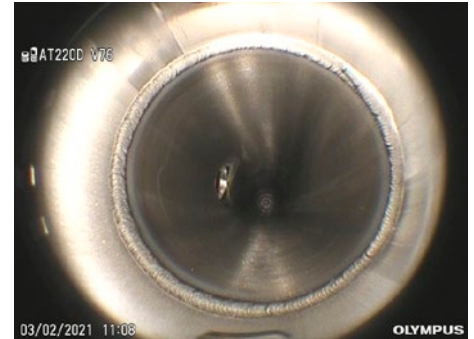
Many water/air circulation tubes and duct pipes in a data center must be maintained in good condition. IPLEX™ videoscopes are engineered to deliver bright, clear images of the inner condition of tubes and pipes.

The PulsarPic™ image processor actively adjusts the brightness levels for a clear view of inner walls of steel pipes. WIDER™ image processing technology supports a wide dynamic range to maintain visibility in dark areas, even when the brightness is decreased, to avoid halation.

Optimize Your View with Optical Adaptors

Interchangeable optical adaptors deliver high-quality images of objects located from close distances to far areas, such as duct filters, sealing, and joints of pipes.

For instance, our optical adaptor with a 220-degree wide-angle view lets you observe both the front and back sides of a welded section at the same time.



Access Hard-to-Reach Spaces

Visual inspections of data center HVAC systems can be difficult with hard-to-reach targets, such as duct pipes near ceilings and small chiller systems.

Our Tapered Flex™ insertion tube optimizes stiffness and flexibility with TrueFeel™ responsive articulation for smooth insertion into complex pipes with bends. Practical accessories such as a semi-flex guide tube and centering devices help the scope reach challenging areas.

Scopes for Multiple Jobs

Our RVI kits include a range of scope lengths from 2–30 m (6.6–98.4 ft.) to support inspection of various pipes and tubes. The interchangeable scope design of the IPLEX GX and IPLEX GAir videoscopes enable a quick switch to a longer or shorter scope that suits the application.



Recommended Kits

Handheld Kit



IPLEX G Lite Videoscope

IPLEX G Lite videoscope Φ 6mm (0.23 in.) Scope lengths: 2 m (6.56 ft.), 3.5 m (11.5 ft.), 10 m (32.8 ft.)	IPLEX G Lite videoscope Φ 4 mm (0.16 in.), Scope lengths: 2 m (6.56 ft.), 3.5 m (11.5 ft.)
AT120D/NF-IV96G 6 mm viewing tip adaptor	AT120D/NF-IV94G 4 mm viewing tip adaptor
AT120D/FF-IV96G 6 mm viewing tip adaptor	AT120D/FF-IV94G 4 mm viewing tip adaptor
AT120S/NF-IV96G 6 mm viewing tip adaptor	AT100S/NF-IV94G 4 mm viewing tip adaptor
AT120S/FF-IV96G 6 mm viewing tip adaptor	AT100S/FF-IV96G 4 mm viewing tip adaptor
AT220D-IV76 8.4 mm viewing tip adaptor	-
Centering device for 6 mm diameter scope*	Centering device for 4 mm diameter scope*
MAJ-2342 guide tube for 6 mm diameter 10 m scope	-
Flex and stay tube, 10 mm OD (0.4 in. OD)*	

*Third-party product.

Large 8-Inch Monitor Kit



IPLEX GX Videoscope

IPLEX GX videoscope, ϕ 6 mm (0.23 in.) Scope lengths: 2 m (6.56 ft.), 3.5 m (11.5 ft.), 7.5 m (24.6 ft.), 10 m (32.8 ft.)	IPLEX GX videoscope ϕ 4 mm (0.16 in.) Scope lengths: 2 m (6.56 ft.), 3.5 m (11.5 ft.)
AT120D/NF-IV96G 6 mm viewing tip adaptor	AT120D/NF-IV94G 4 mm viewing tip adaptor
AT120D/FF-IV96G 6 mm viewing tip adaptor	AT120D/FF-IV94G 4 mm viewing tip adaptor
AT120S/NF-IV96G 6 mm viewing tip adaptor	AT100S/NF-IV94G 4 mm viewing tip adaptor
AT120S/FF-IV96G 6 mm viewing tip adaptor	AT100S/FF-IV94G 4 mm viewing tip adaptor
AT220D-IV76 8.4 mm viewing tip adaptor	-
Centering device for 6 mm diameter scope*	Centering device for 4mm diameter scope*
MAJ-2341 guide tube for 6 mm diameter 7.5 m scope	-
MAJ-2342 guide tube for 6 mm diameter 10 m scope	-
Flex and stay tube, 10 mm OD (0.4 in. OD)*	

*Third-party product.

Extra-Long Kit



IPLEX GAir Videoscope

IPLEX GAir videoscope ϕ 8.5 mm (0.33 in.), Scope lengths: 20 m (65.6 ft.), 30 m (98.4 ft.)
AT120D/NF-IV98GA 8.5 mm viewing tip adaptor
AT120D/FF-IV98GA 8.5 mm viewing tip adaptor
AT120S/NF-IV98GA 8.5 mm viewing tip adaptor
AT120S/FF-IV98GA 8.5 mm viewing tip adaptor
AT220D-IV98GA 10 mm viewing tip adaptor
Centering device MAJ-1935
Guide head MAJ-2484
Push rod adaptor MAJ-2486
Push rod*

*Third-party product.

Note: the kit comes with recommended items, but you can also select items to customize your kit.

Accessories



Flex and Stay Tube

Pliable yet rigid tube that can be shaped freely. Easily bend the tube in any shape to reach an object for remote visual inspection.

The outer diameter is 10 mm (0.39 in.)



Centering Device

Holds the insertion tube centered inside a pipe or tube. Available for scopes with a diameter of 4 mm (0.16 in.), 6 mm (0.23 in.), and 8.5 mm (0.33 in.).



Flexible Guide Tube

Increasing the insertion tube's rigidity, the flexible guide tube assists you in inserting the scope to reach deeper areas. Available for 7.5 m (24.6 ft) and 10 m (32.8 ft) scopes.



Guide Head

Attach the guide head on the scope tip to ease its passage over the joints of a pipe, reducing the friction against the pipe's inner surface. Available for 20 m (65.6 ft) and 30 m (98.4 ft) scopes.



Push Rod Adaptor

Mounts the push rod onto the scope. The combination of the push rod and the dedicated adaptor enables the scope to pass over elbow joints to reach deep into a pipe. Available for 20 m (65.6 ft) and 30 m (98.4 ft) scopes.

www.olympus-ims.com

OLYMPUS CORPORATION is ISO9001 and ISO14001 certified.

All specifications are subject to change without notice.

This product is designed to be used in industrial environments for the electromagnetic compatibility (EMC) performance. Using it in a residential environment may affect other equipment in the environment.

Olympus, the Olympus logo, IPLEX, PulsarPic, WIDER, and Spot-Ranging are trademarks of Olympus Corporation or its subsidiaries. All company and product names are registered trademarks and/or trademarks of their respective owners.

OLYMPUS[®]

OLYMPUS CORPORATION