

## BXC-FSU

Sensing unit for Auto Focus



Sensing unit for active auto focus

### SPECIFICATIONS

Global item code / Local code for USA	N6387300 / BXC-FSU
Predecessor product information	None
Product Category	Motorized Units
Applicable controller	BXC-CBB + BXC-CBE1
Cooling system	Natural cooling
Auto Focus light source	Light source: Laser diode Laser oscillation wavelength: 775-800 nm Maximum laser power: 300 uW Laser class: Class1 Reflectance of applicable sample: 0.5% – 100%
Applicable observation method	<ul style="list-style-type: none"> <li>• Reflected light brightfield observation</li> <li>• Reflected light darkfield observation</li> <li>• Reflected light differential interference observation (Used with analyzer U-AN and MX-AFDIC)</li> <li>• Reflected light simple polarization observation (Used with analyzer U-AN and MX-AFDIC)</li> </ul>
Transmittance * reference value	<ul style="list-style-type: none"> <li>• Dichroic mirror Un-polarized light incident at 45° 400 – 700 nm 90% or more on average 765 – 795 nm 1% or less</li> <li>• IR cut filter Up-polarized light incident at 0° 400 – 420 nm 80% or more, 85% or more on average 420 – 680 nm 90% or more 680 – 700 nm 80% or more, 85% or more on average 770 – 795 nm 0.1% or less</li> </ul>

# BXC-FSU

Applicable objectives	LMPLFLN5X LMPLFLN5XBD LMPLFLN10X LMPLFLN10XBD LMPLFLN20X LMPLFLN20XBD LMPLFLN50X LMPLFLN50XBD LMPLFLN100X LMPLFLN100XBD	MPLFLN5X MPLFLN5XBD MPLFLN10X MPLFLN10XBD MPLFLN20X MPLFLN20XBD MPLFLN50X MPLFLN50XBD MPLFLN100X MPLFLN100XBD	MPLFLN150XBD MPLAPON50X MPLAPON100X MPLFLN5X2 MPLFLN5XBD2 MXPLFLN20X MXPLFLN20XBD MXPLFLN50X MXPLFLN50XBD
Weight	About 2.6 kg		
Country of Origin	Japan		

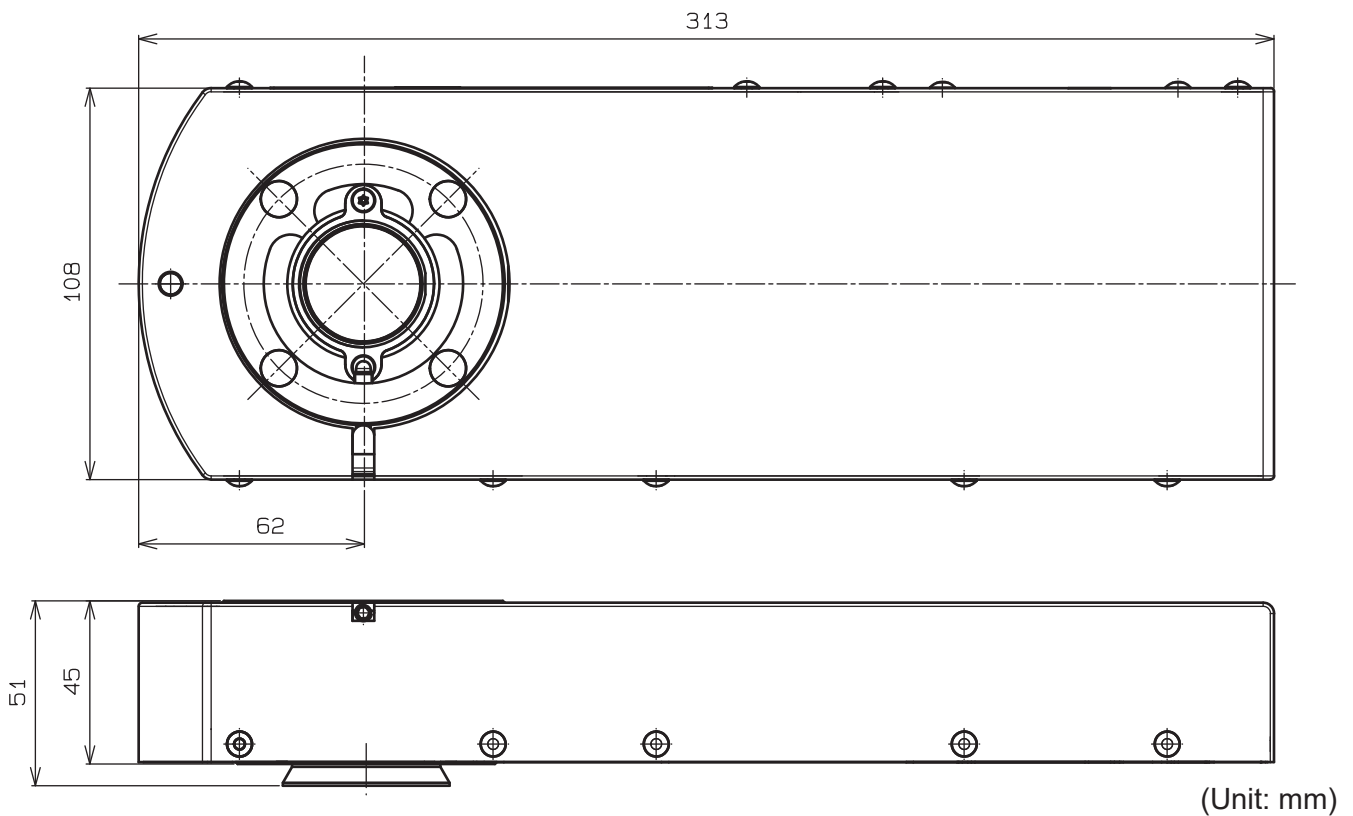
## SYSTEM ENVIRONMENT LIMITATIONS FOR OPERATION

Environment	Indoor use
Temperature T0 [°C]	10 – 35
Humidity RH0 [%]	30 – 85

## PACKING LIST

Item	Quantity
Sensing unit	1
Cap	4
Cable	1

## MAIN DIMENSION



(Unit: mm)

· Specifications and appearances are subject to change without any notice or obligation on the part of the manufacturer.